

Mountview^{RE}



15 Tullane Place Kellyville Ridge NSW

5 🛏 2 🚿 2 🚗

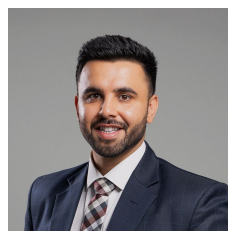
Chirag & the team at Mountview Real Estate proudly present this stunning East-facing family residence, where space, style and lifestyle come together to create the perfect modern sanctuary.

Positioned in one of Kellyville Ridge's most peaceful and family-friendly streets, this beautifully presented double-storey home offers an exceptional blend of comfort, sophistication and convenience. Set within close proximity to local shops, parks, tennis courts and quality schools including The Ponds High School and John Palmer Public School, this is an outstanding opportunity for growing or multi-generational families.

From the moment you step inside, you are greeted by a

[For full version visit the website](https://www.mountviewre.com.au)

Type : House
Price : JUST LISTED
Land Size : 616 sqm
View : <https://www.mountviewre.com.au/sale/nsw/hills/kellyville-ridge/residential/house/8700923>

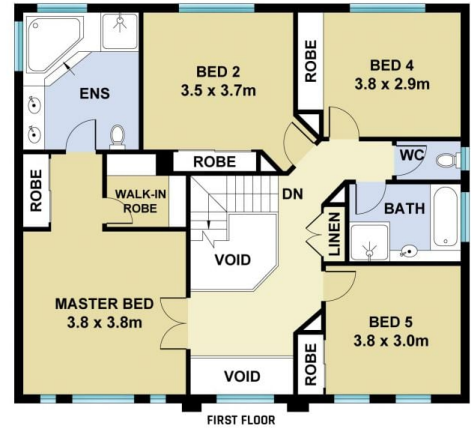
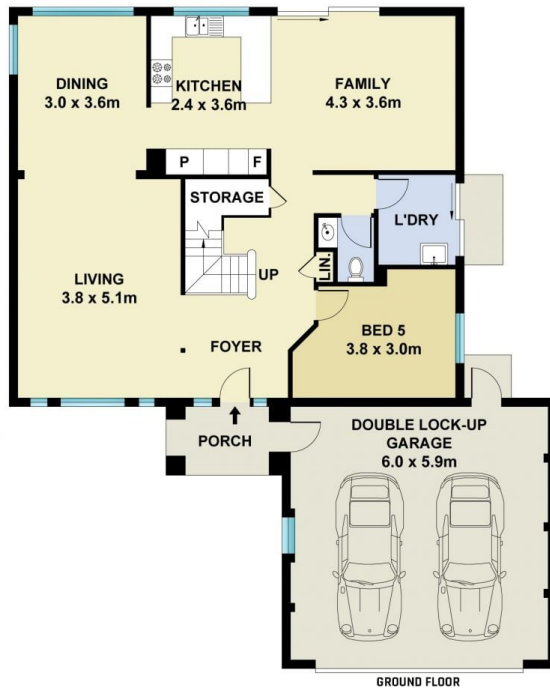


Chirag Arora
02 8883 3592



Anoop Dhir
02 8883 3592

<https://www.mountviewre.com.au>



This floorplan including furniture, fixture measurements and dimensions are approximate and for illustrative purposes only. All enquiries must be directed to the agent, vendor or party representing this floor plan

15 TULLANE PLACE KELLYVILLE RIDGE

