

# Mountview<sub>RE</sub>



## 30 Carbine Street Box Hill NSW

4 2 1

Mountview Real Estate proudly presents this exceptional double-storey residence, offering a perfect blend of luxury, comfort, and modern family living.

Positioned in one of Box Hill's most sought-after locations, just moments from the picturesque Brindle Parkway Reserve, this beautifully crafted home enjoys a premium setting surrounded by natural beauty while remaining close to quality schools, local parks, premium amenities, and the future Box Hill Town Centre.

Showcasing a spacious and thoughtfully designed floorplan, this stunning residence has been built with a strong emphasis on quality, functionality, and versatility. Designed to accommodate growing families with ease, the

[For full version visit the website](https://www.mountviewre.com.au)

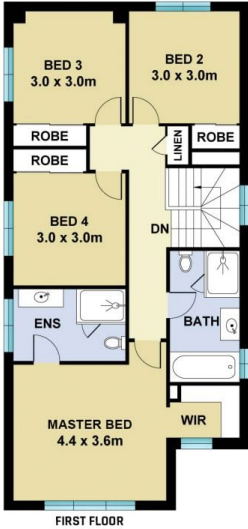
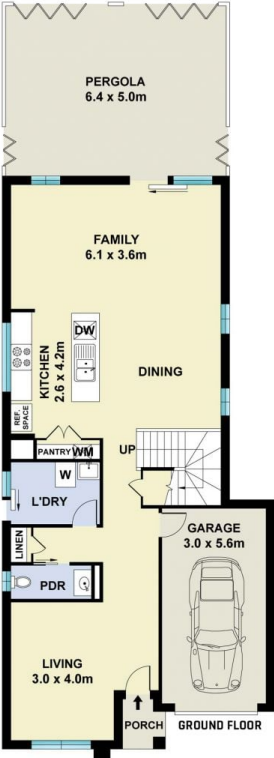
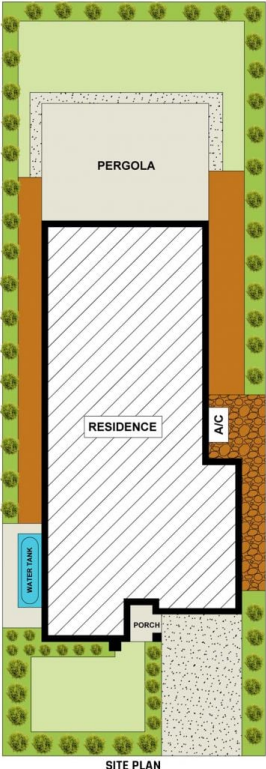
**Type** : House  
**Price** : \$1,270,000 - \$1,320,000  
**Land Size** : 315 sqm  
**View** : <https://www.mountviewre.com.au/sale/nsw/western-sydney/box-hill/residential/house/8697190>



**Anoop Dhir**  
02 8883 3592



**Ravi Goyal**  
02 8883 3592



*This floorplan including furniture, fixture measurements and dimensions are approximate and for illustrative purposes only. All enquiries must be directed to the agent, vendor or party representing this floor plan*

30 CARBINE STREET BOX HILL

