

Mountview^{RE}



80 Rutherford Avenue Kellyville NSW

3 2 2

Built to a very high standard, this luxurious townhouse is filled with high-end inclusions. Located within minutes to bus stops and the upcoming Norwest Rail Link your family will love the way the fastidious owners have maintained the property.

Type : Townhouse

View : <https://www.mountviewre.com.au/lease/nsw/hills/kellyville/residential/townhouse/8316873>

Boasting:

- Three light-filled bedrooms with floor to ceiling windows, all with built-in robes
- Enormous master suite with a ample robe space and large ensuite
- Newly updated quality timber flooring throughout - no carpets!
- Modern kitchen with gas cooktop, glass splashback, stone



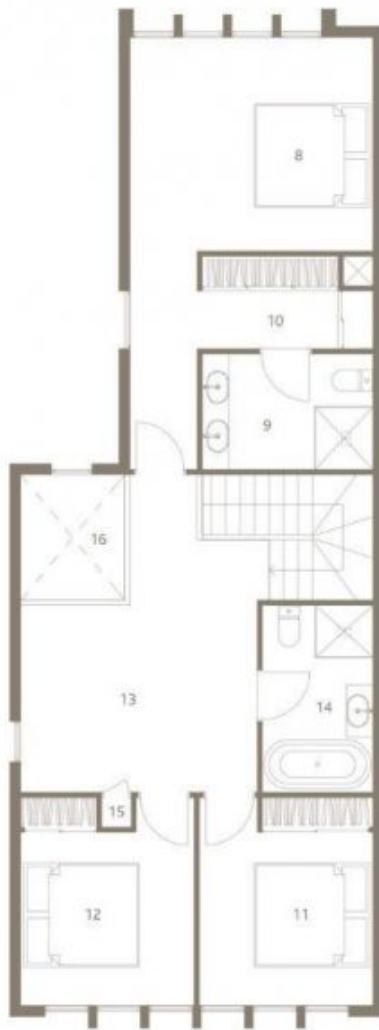
Woetso Jigdak
02 8883 3592



Mvre Rentals
02 8883 3592

[For full version visit the website](https://www.mountviewre.com.au)

<https://www.mountviewre.com.au>



First Floor



Ground Floor

THE PARC

KELLYVILLE - SYDNEY

Sunland Group

ESTABLISHED
1994

[TYPE E] LOTS 2,9,16

Ground Floor Area 107m² First Floor Area 86m² Total Area 193m²

0 5m

1 Living | 2 Dining | 3 Kitchen | 4 Garage | 5 Powder Room | 6 Laundry | 7 Hall | 8 Bedroom 1 | 9 Ensuite
10 Walk in Robe | 11 Bedroom 2 | 12 Bedroom 3 | 13 Study | 14 Bathroom | 15 Linen | 16 Void | 17 Store
Memorial Ave Kellyville New South Wales 2155 Telephone 1800 559 978 sunlandgroup.com.au

All floor areas measured to outside face of exterior walls and centre of party walls (including garage). First floor plans exclude area of exterior stairs and roof (as measured at ground level). All external areas (terraces, balconies, external entry porches and paved) are excluded from area calculation. All reasonable care has been taken in the preparation of these floor plans. To the best of our knowledge, no relevant information has been omitted. However, Sunland Group Limited and it's appointed agents, brokers, all liability should any information or matter concerned herein differ from the contract of sale or the actual construction/development. All information is correct at the time of printing. 2017/06