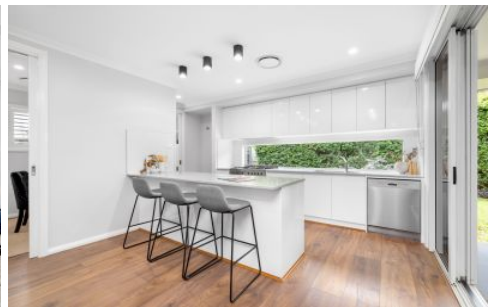


Mountview^{RE}



16 Brocklebank Street Box Hill NSW

4 2 2

Warm and inviting, Mountview RE is proud to present this fantastic Eden Brae built home, located in one of the best pockets of Box Hill. Featuring a plethora of living space, natural light, and thoughtful choices/inclusions, this home offers quality throughout and is sure to satisfy all your family needs from comfort to entertainment.

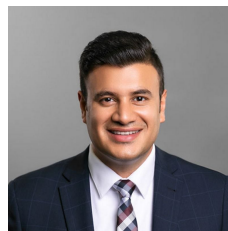
Features:

? Four Family-Sized Bedrooms - Designed with ample space and comfort in mind. The master suite boasts an ensuite and an expansive walk-in wardrobe for the ultimate retreat.

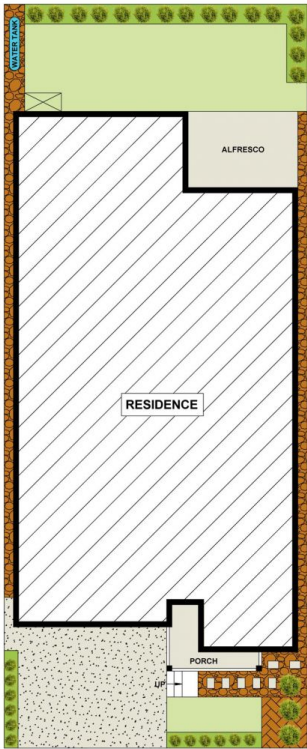
? Sleek, Modern Kitchen - Positioned at the rear of the home, featuring a striking feature window splashback, soft-close cabinetry, walk-in pantry and high quality

[For full version visit the website](https://www.mountviewre.com.au)

Type : House
Price : \$ 1,300,000
Land Size : 381 sqm
View : <https://www.mountviewre.com.au/sale/nsw/western-sydney/box-hill/residential/house/8250768>



Rahul Sehgal
02 8883 3592



This floorplan including furniture, fixture measurements and dimensions are approximate and for illustrative purposes only. All enquiries must be directed to the agent, vendor or party representing this floor plan

16 BROCKLEBANK STREET BOX HILL

