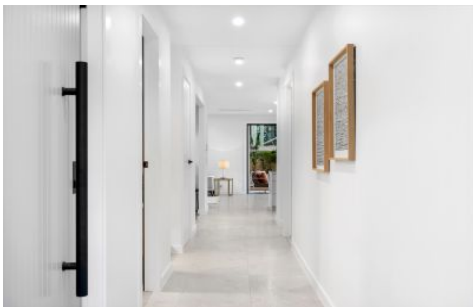


Mountview^{RE}



22 Rainforest Street (Rouse Hill Heights) Box Hill NSW

5 🛏 3 🚿 2 🚗

Inder Nirman & the team At Mountview RE Proudly present this stunningly sophisticated brand-new family home in "ROUSE HILL HEIGHTS ESTATE", a highly desirable location that offers the absolute best of Box Hill living.

Positioned perfectly within a short drive to Rouse Hill Town Centre, and The Rouse Hill Metro Station, as well as being close by to all the upcoming developments that Box Hill has to offer such as The New Town Centre, Primary Schools, and upcoming Sports fields.

Featuring:

~ Modern Facade with wide main door entrance with Video Doorbell

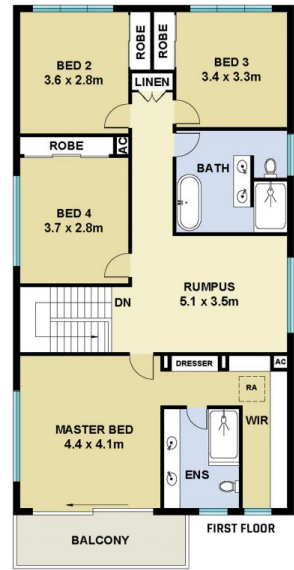
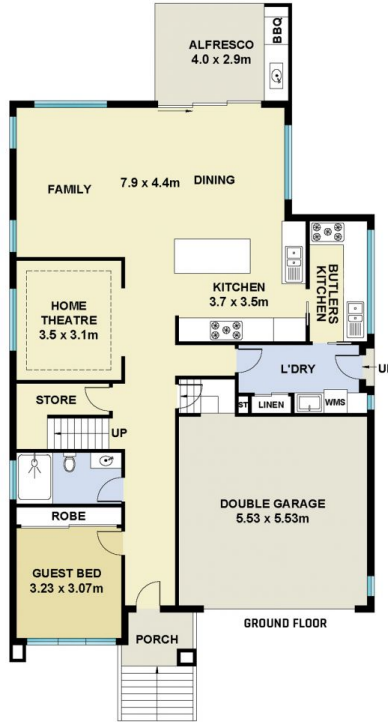
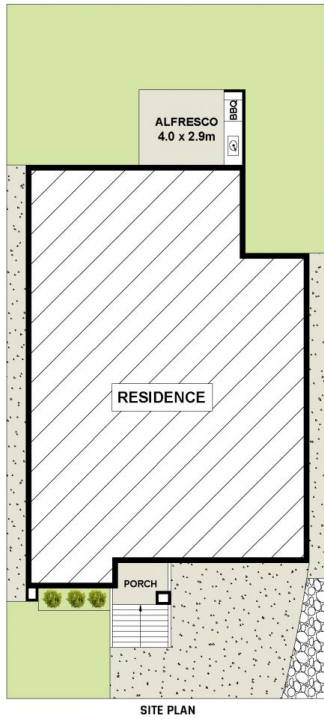
[For full version visit the website](https://www.mountviewre.com.au)

Type : House
Price : \$ 1,575,000
Land Size : 338 sqm
View : <https://www.mountviewre.com.au/sale/nsw/western-sydney/box-hill/residential/house/8073799>



Inder Nirman
02 8883 3592

<https://www.mountviewre.com.au>



This floorplan including furniture, fixture measurements and dimensions are approximate and for illustrative purposes only. All enquiries must be directed to the agent, vendor or party representing this floor plan

22 RAINFOREST STREET BOX HILL

