

Mountview_{RE}



12 Jumbuck Street Marsden Park NSW

5 3 2

Mountview RE is proud to present this brand-new stunning custom-designed family entertainer is positioned in a quiet location. Prepare to be amazed by this lavish masterpiece.

As you enter the home, you will be astounded by the expansive and practical floorplan. The sophisticated entrance will leave you in awe as you notice the 3M high ceilings and ultra-modern design, boasting plenty of natural light throughout. A large study or extra living space to the front of the home makes this the perfect opportunity for a home office. As you continue into the house, you will be amazed by the floating staircase with unique French finishes. The spacious and versatile areas of this stunning home are carried through to a large family and dining room just off the gourmet kitchen, which boasts loads of storage as well as a walk-in pantry.

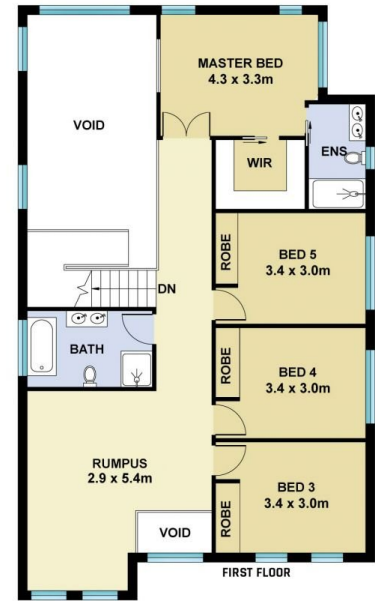
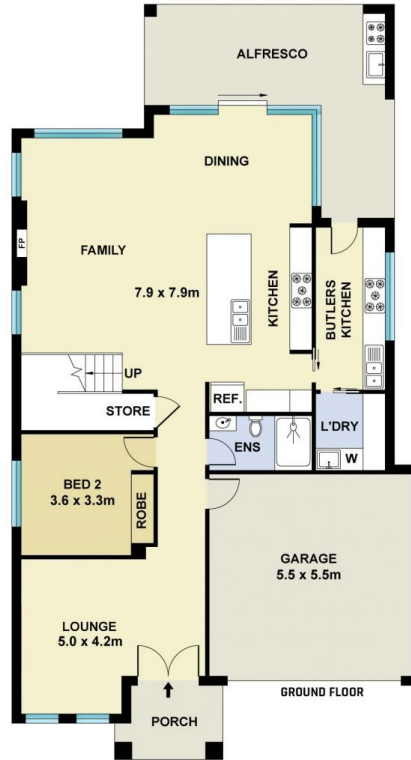
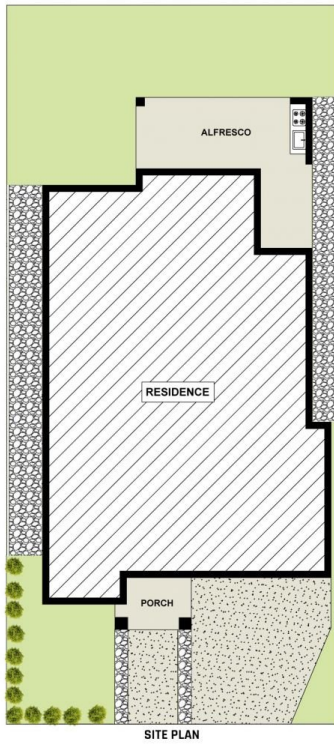
Price : Contact Agent
Land Size : 344 sqm
View : <https://www.mountviewre.com.au/sale/nsw/western-sydney/marsden-park/residential/house/7988401>



Malwinder Pandher
02 8883 3592



Ravi Goyal
02 8883 3592



This floorplan including furniture, fixture measurements and dimensions are approximate and for illustrative purposes only. All enquiries must be directed to the agent, vendor or party representing this floor plan.

12 JUMBUCK STREET MELONBA

