

# Mountview<sub>RE</sub>



## 23 Corsica Way Kellyville NSW

5 3 4

Mountview RE is proud to present this impressive architecturally designed residence, holding a blue-ribbon location is nestled alongside Bella Vista and in walking distance to the Northwest rail Link Bella Vista Metro Station.

Located on the border of Bella Vista, close to Norwest Business Park, Bella Vista Public School, Balmoral Road sports complex, shops, waterfront restaurants, cafes, T-buses with easy access to M2 & M7 motorways.

### Featuring:

- ~ Formal lounge/home office at the front features 3M high ceilings
- ~ Guest accommodation on ground floor with built-in-robos and stylish ensuite facility
- ~ Large sun-filled family living area and dining area with

**Land Size** : 446 sqm

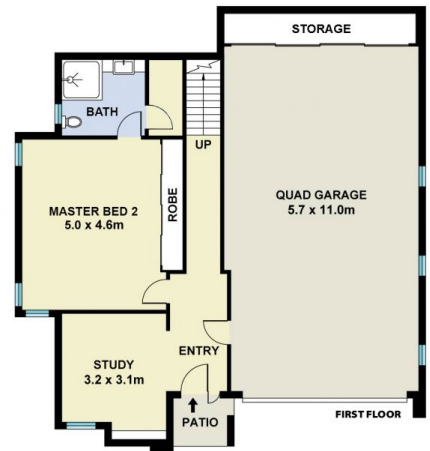
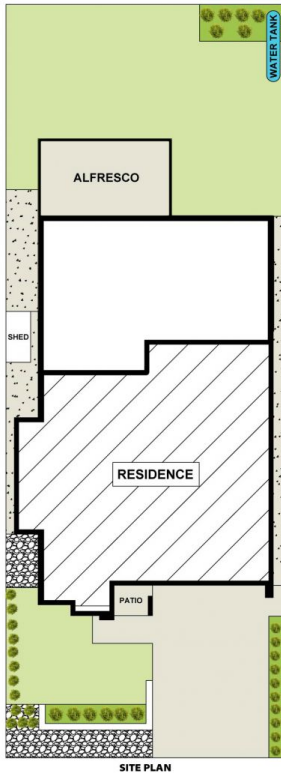
**View** : <https://www.mountviewre.com.au/lease/nsw/hills/kellyville/residential/house/7942116>



**Mvre Rentals**  
02 8883 3592



**Woetso Jigdak**  
02 8883 3592



*This floorplan including furniture, fixture measurements and dimensions are approximate and for illustrative purposes only. All enquiries must be directed to the agent, vendor or party representing this floor plan*

23 CORSICA WAY KELLYVILLE

