

Mountview_{RE}



15 Bindo Street The Ponds NSW

4 3 2

Warm and inviting, Mountview RE is proud to present this East facing McDonald Jones home, located in a prime position in the heart of The Ponds. Featuring a plethora of living space, natural light, and premium finishes. This home offers quality throughout and is sure to satisfy all your family needs from comfort to entertainment.

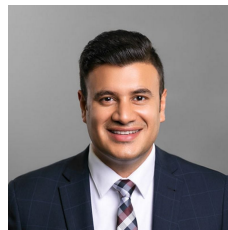
Well situated, only moments from Riverbank Public School, The Ponds High School and The Ponds Shopping Centre, as well as a short drive to Rouse Hill Town Centre, Schofields Train Station and Tallawong Metro Station.

This home is the perfect home for you and your family!

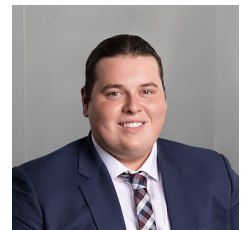
Featuring:

- McDonald Jones masterpiece: featuring a full rendered facade and a thoughtfully designed floorplan, made to offer

Price : \$ 1,651,000
Land Size : 330 sqm
View : <https://www.mountviewre.com.au/sale/nsw/hills/the-ponds/residential/house/7930860>

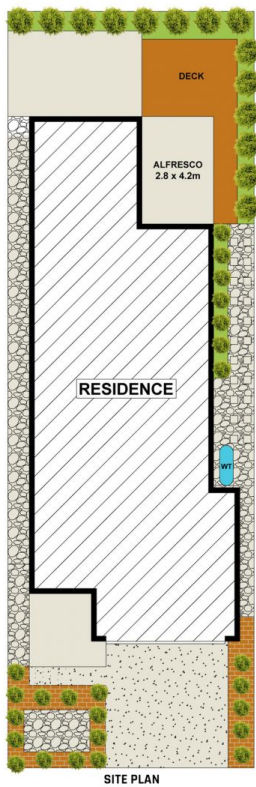


Rahul Sehgal
02 8883 3592

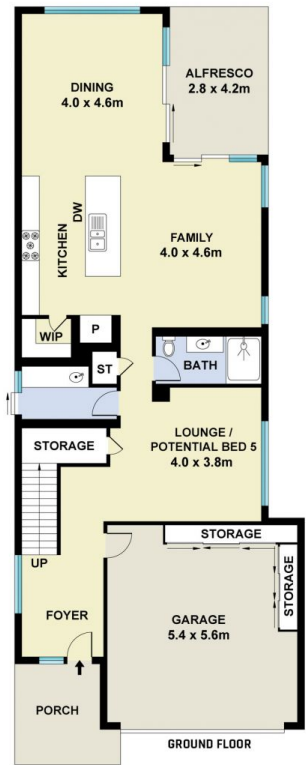


Chet Greatbatch Murphy
02 8883 3592

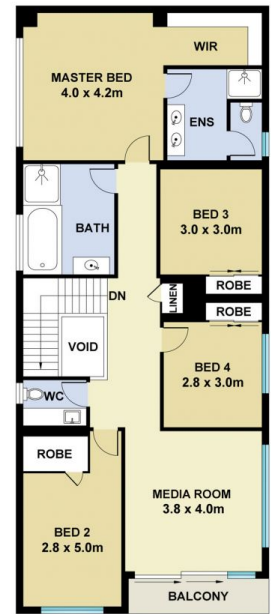
<https://www.mountviewre.com.au>



SITE PLAN



GROUND FLOOR



FIRST FLOOR

This floorplan including furniture, fixture measurements and dimensions are approximate and for illustrative purposes only. All enquiries must be directed to the agent, vendor or party representing this floor plan

15 BINDO STREET THE PONDS

