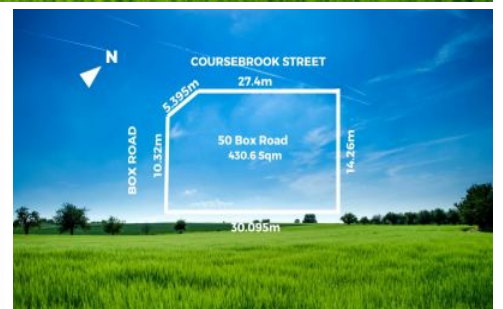
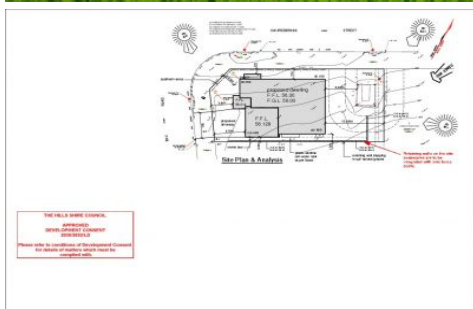


Mountview_{RE}



50 Box Road Box Hill NSW

Mountview RE proudly presents 50 Box Road, Box Hill. Well positioned, this block offers the perfect opportunity for any family to establish themselves well in this growing community. Waste no time to start construction with DA-approved plans for a double-storey home.

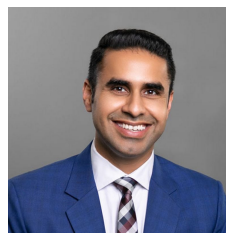
50 Box Road, fairly flat and level land makes it easy to build on with lower site costs. Land size: 430.6 Sqm, with a wide frontage, conveniently located, with only a short drive away from a multitude of amenities, such as the Rouse Hill Town Centre, a short drive to both Rouse Hill & Tallawong Metro Stations as well as a range of other services.

Features:

- 430.6 sqm block with 14.26 frontage.
- Registered land! ready to build your dream home.
- DA-approved for a Double Storey Home 35SQ

Land Size : 430.6 sqm

View : <https://www.mountviewre.com.au/sale/nsw/western-sydney/box-hill/residential/land/7905479>



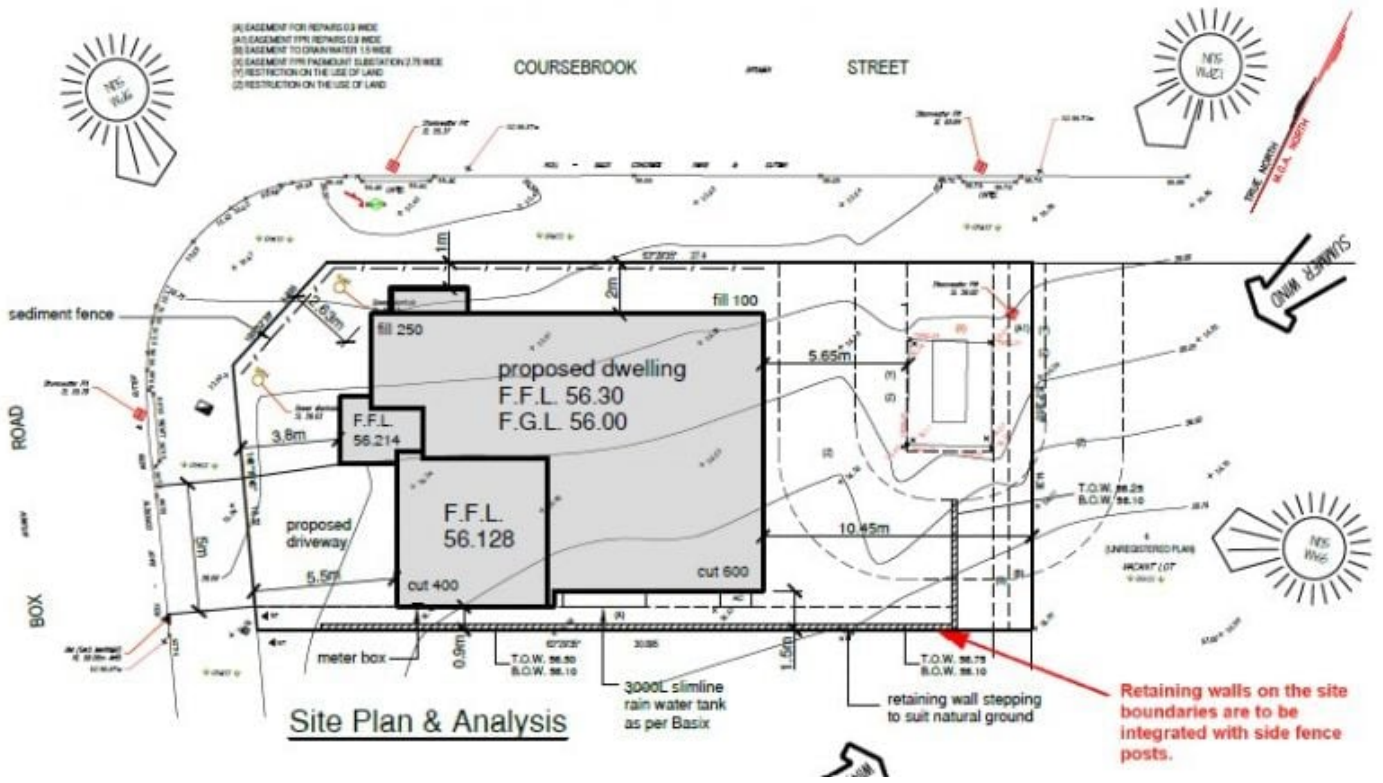
Raman Brar
02 8883 3592



Inder Nirman
02 8883 3592

- (A) ASSESSMENT FOR REPAIRS OR WIDE
- (B) ASSESSMENT FOR REPAIRS OR WIDE
- (C) ASSESSMENT TO DRAINAGE WATER 1.5 WIDE
- (D) ASSESSMENT FOR FENCED/POST/RAIL/2.75 WIDE
- (E) RESTRICTION ON THE USE OF LAND
- (F) RESTRICTION ON THE USE OF LAND

COURSEBROOK STREET



Site Plan & Analysis

Retaining walls on the site boundaries are to be integrated with side fence posts.