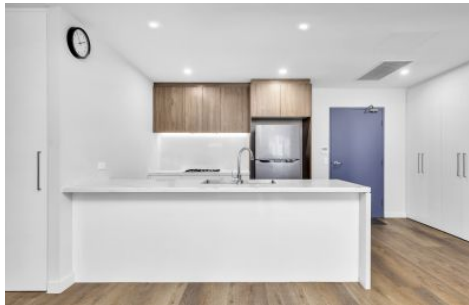
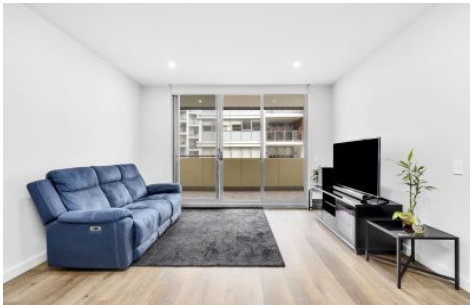


Mountview_{RE}



103/4B Isla Street Schofields NSW

2 2 1

Mountview Real Estate is very proud to present this super spacious, stunning near new 2 bedroom apartment is a great opportunity for First Home Buyers and Investors who wants to experience ultra living at an affordable price. Location is near to Public Schools, Schofields train station, Newly Opened Coles and Shopping Centre.

View : <https://www.mountviewre.com.au/lease/nsw/western-sydney/schofields/residential/unit/7877340>

Some of the many features of this home include:

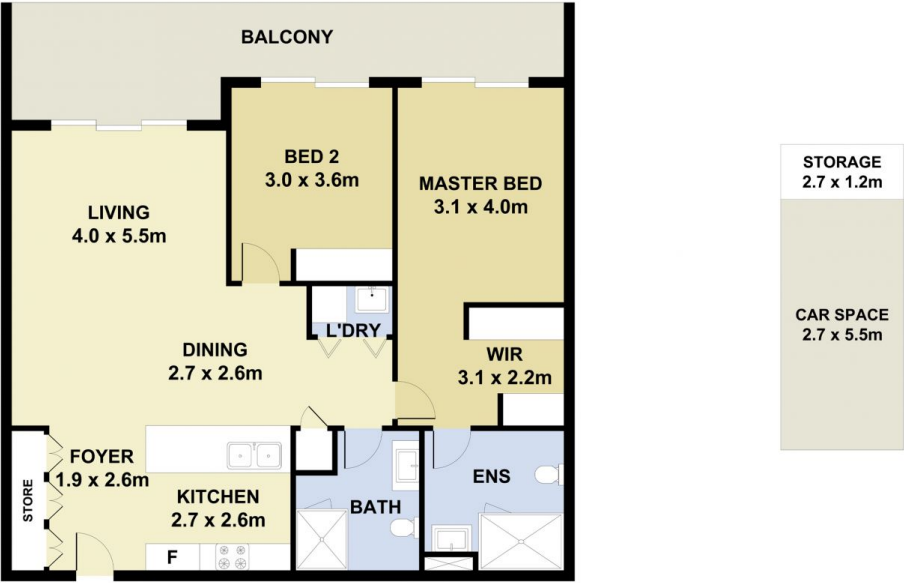
- Impressive kitchen featuring premium stainless steel appliances, gas cooking, dishwasher and 40mm bench top.
- Generous sized defined lounge & dining areas
- Master bedroom with walk through robe and ensuite
- Main bathroom easily accessible to the 2nd bedroom including built in robe
- Hybrid floating timber style flooring & neutral colour scheme



Tenzin Tsega
02 8883 3592



Woetso Jigdak
02 8883 3592



This floorplan including furniture, fixture measurements and dimensions are approximate and for illustrative purposes only. All enquiries must be directed to the agent, vendor or party representing this floor plan

103/4B ISLA STREET SCHOFIELDS

