

18A Rowley Street Pendle Hill NSW

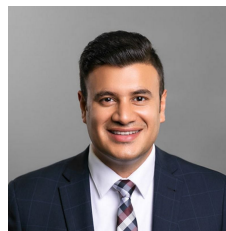
5 3 1

Rahul Sehgal & MVRE proudly present 18A Rowley Street, to the market. A newly finished home, this property has been designed and built for comfortable family living in mind. The home is well situated, close to parks, schools and public transport.

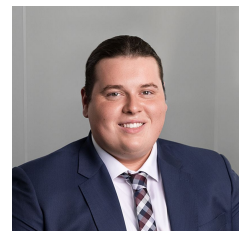
Features:

- * 2.7 metres high ceilings on both GF & FF.
- * 5 generously size bedrooms, 4 with built-in-robos and main with walk-in-robe, ensuite bathroom and private balcony.
- * Downstairs features a bedroom and full bathroom, perfect for guests or extended family.
- * Bathrooms contain floor to ceiling tiles, floating designer vanities and 40mm stone benchtops throughout.
- * Covered alfresco area opening up to an already landscaped backyard.

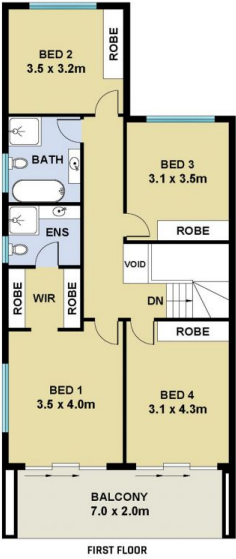
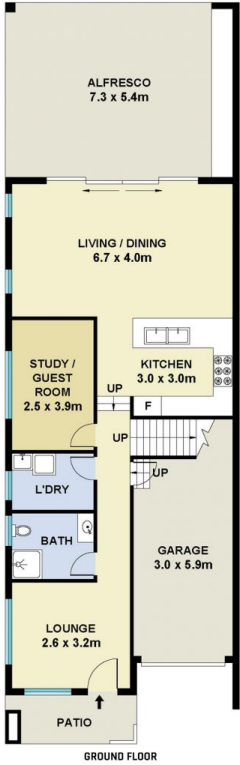
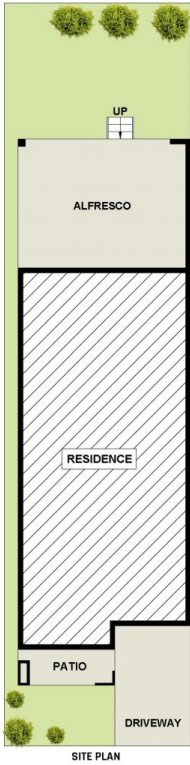
Price : \$ 1,300,000
Building Size : 254.15 sqm
Land Size : 319 sqm
View : <https://www.mountviewre.com.au/sale/nsw/parramatta/pendle-hill/residential/house/7823150>



Rahul Sehgal
02 8883 3592



Chet Greatbatch Murphy
02 8883 3592



This floorplan including furniture, fixture measurements and dimensions are approximate and for illustrative purposes only. All enquiries must be directed to the agent, vendor or party representing this floor plan

18A ROWLEY STREET PENDLE HILL

