

Mountview_{RE}



19 Canonbury Street Schofields NSW

4 2 2

Mountview RE is proud to present this architect designed stunning family home. This three years young modern family home located in a quiet sought after pocket of Tallawong is just moments away from all amenities, buses, schools, Woolworths/Coles at Schofields, train station, Tallawong Metro and a brand new childcare centre facility in the same street.

Boasting:

- ~ Practical and spacious floorplan
- ~ Formal living room
- ~ 40mm stone benchtops with polyurethane soft close cabinetry, 900mm stainless steel appliances, gas cooking, dishwasher and ample storage space
- ~ Generous size living area with 2 sliding doors opens to alfresco
- ~ Power room facility downstairs

Price : \$ 1,215,000
Land Size : 250 sqm
View : <https://www.mountviewre.com.au/sale/nsw/western-sydney/schofields/residential/house/7793480>

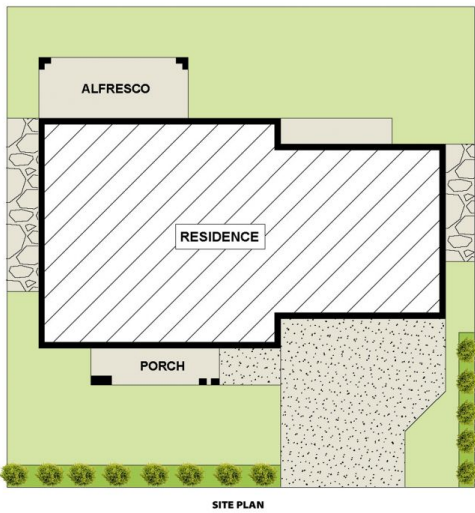
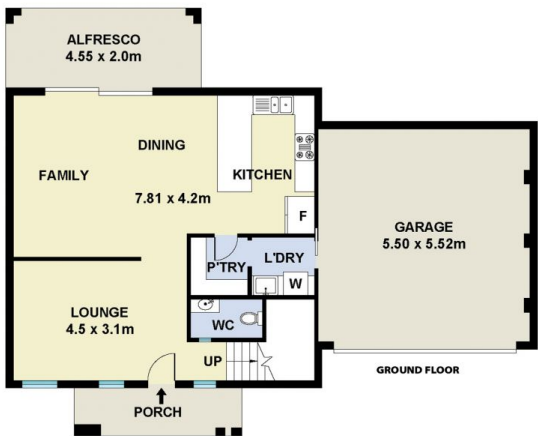
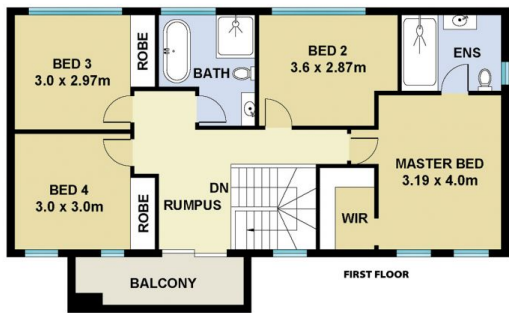


Ravi Goyal
02 8883 3592



Malwinder Pandher
02 8883 3592

<https://www.mountviewre.com.au>



This floorplan including furniture, fixture measurements and dimensions are approximate and for illustrative purposes only. All enquiries must be directed to the agent, vendor or party representing this floor plan

19 CANONBURY STREET TALLAWONG

