

# Mountview<sub>RE</sub>



**311/10 Grassland Street Rouse Hill NSW**

2  2  1 

Mountview RE is proud to present this gorgeous apartment designed and finished to an impressive standard. 311/10 Grassland St promises everyday comfort and luxury within a resort-style complex that boasts contemporary sophistication.

**Price** : \$ 635,000  
**Land Size** : 110 sqm  
**View** : <https://www.mountviewre.com.au/sale/nsw/hills/rouse-hill/residential/apartment/7695497>

Enjoy the convenience of being moments to Tallawong Metro Rail, quality local schools and Rouse Hill Town Centre.

- Spacious open plan living and dining with separate study area
- Set in a complex with access to resort style facilities including pool, tennis courts, and kids water park
- Gourmet gas kitchen with stone benches and Smeg appliances
- Bedrooms with walk in/built-in robes and access to

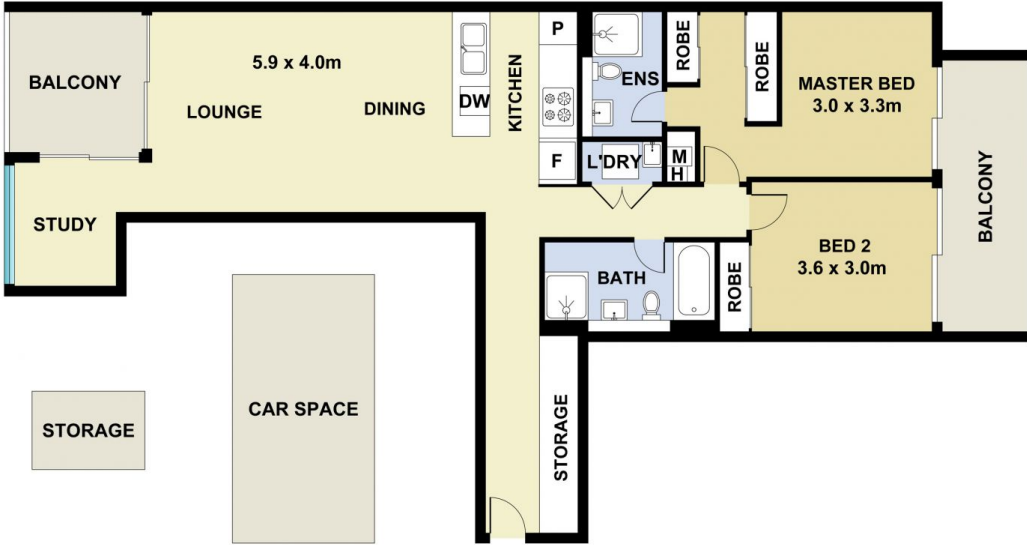


**Hesh Rasitha**  
02 8883 3592



**Ravi Goyal**  
02 8883 3592

<https://www.mountviewre.com.au>



*This floorplan including furniture, fixture measurements and dimensions are approximate and for illustrative purposes only. All enquiries must be directed to the agent, vendor or party representing this floor plan*

311/10 GRASSLAND STREET ROUSE HILL

