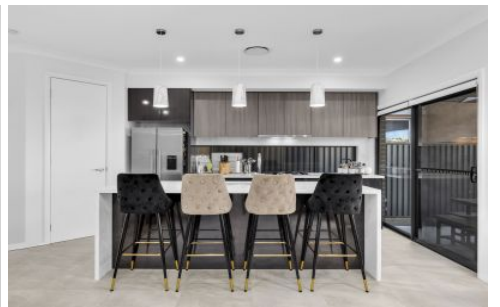


# Mountview<sup>RE</sup>



15 Wallaston Street Rouse Hill NSW

4 3 2

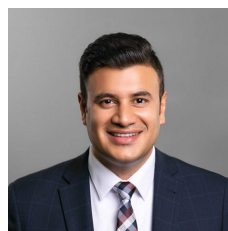
Rahul Sehgal and MVRE proudly present 15 Wallaston Street, a gorgeous, brand new home situated within walking distance to Tallawong Metro Station. The home is perfectly positioned with close proximity to Tallawong Public School, Ponds Shopping Centre, Rouse Hill Town Centre, and The Rouse Hill Metro Station, as well as being close by to all the upcoming developments that Rouse Hill has to offer such as The Tallawong Metro Shopping Centre, Cudgegong Road Local Shopping Complex, and upcoming Sports fields on Tallawong Road

**Price** : \$ 1,320,000  
**Building Size** : 220 sqm  
**Land Size** : 280 sqm  
**View** : <https://www.mountviewre.com.au/sale/nsw/hills/rouse-hill/residential/house/7692944>

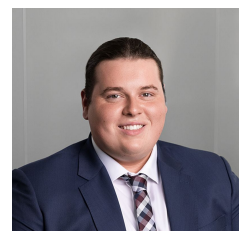
This one is sure to impress!

Features:

- ~ 4 Spacious Bedrooms.
- ~ Master bedroom with walk-in wardrobe, ensuite with vanity

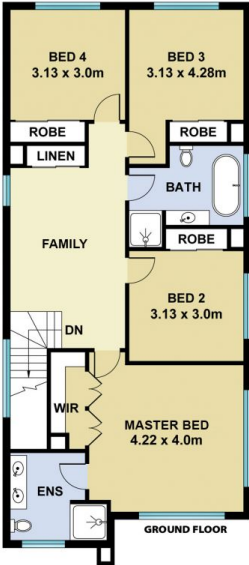
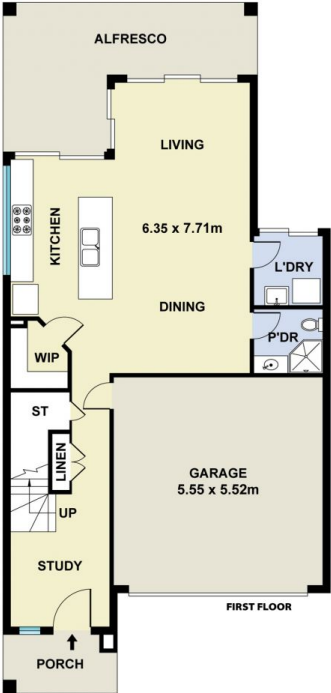


**Rahul Sehgal**  
02 8883 3592



**Chet Greatbatch Murphy**  
02 8883 3592

<https://www.mountviewre.com.au>



*This floorplan including furniture, fixture measurements and dimensions are approximate and for illustrative purposes only. All enquiries must be directed to the agent, vendor or party representing this floor plan*

15 WALLASTON STREET ROUSE HILL

