

Mountview^{RE}



28 Stockhorse Avenue Box Hill NSW

4 3 2

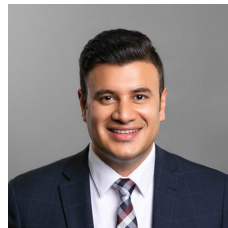
Rahul Sehgal and MVRE proudly present 28 Stockhorse Avenue, a gorgeous, brand new home situated in the Hills of Carmel estate. The home is perfectly positioned with close proximity to Carmel Village Shopping Center, Rouse Hill Town Centre, and The Rouse Hill Metro Station, as well as being close by to all the upcoming developments that Box Hill has to offer such as The New Town Centre, Primary Schools, and upcoming Sports fields.

Price : \$ 1,360,000
Land Size : 313 sqm
View : <https://www.mountviewre.com.au/sale/nsw/western-sydney/box-hill/residential/house/7612960>

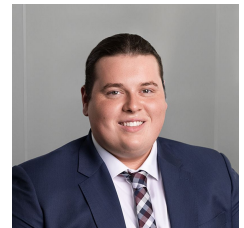
This one is sure to impress!

Features:

- ~ 4 Spacious Bedrooms, with 1 downstairs offering ease for multigenerational families or for hosting guests.
- ~ Master bedroom with walk-in wardrobe, ensuite with floating vanity
- ~ Upstairs bedrooms feature built-in wardrobes.

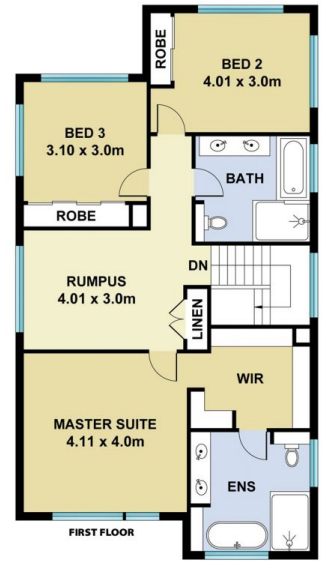
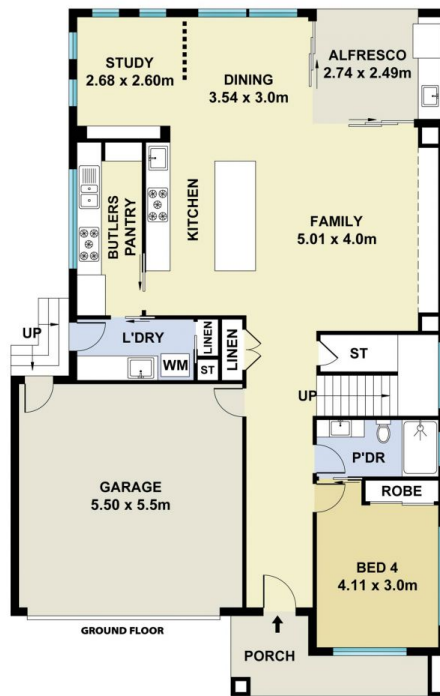
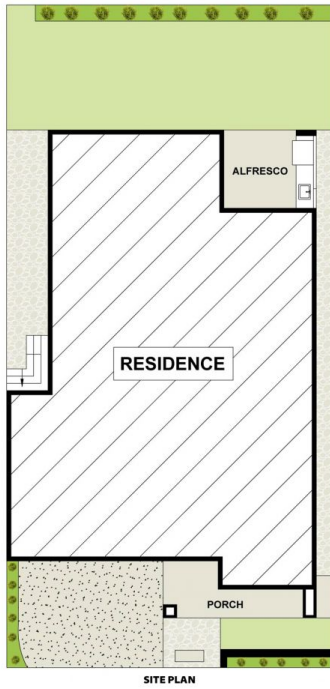


Rahul Sehgal
02 8883 3592



Chet Greatbatch Murphy
02 8883 3592

<https://www.mountviewre.com.au>



This floorplan including furniture, fixture measurements and dimensions are approximate and for illustrative purposes only. All enquiries must be directed to the agent, vendor or party representing this floor plan

28 STOCKHORSE AVENUE BOX HILL

