

# Mountview<sub>RE</sub>



## 34 Boundary Road Schofields NSW

4 2 2

Mountview RE is proud to present this much loved family home located conveniently within a short drive to Tallawong Metro, Schofields Train Station, and Schofields Village.

### Boasting:

- Huge open plan living, dining and kitchen area
- Spacious kitchen with stone tops, stainless steel appliances, gas cooking and ample storage space
- Great sized bedrooms with the master having its own walk in robe and ensuite
- Dedicated sunlit rumpus upstairs leading onto the balcony area
- Space for a secondary study nook upstairs
- Undercover entertaining area with large backyard for the kids to run around
- Extras include brand new timber flooring upstairs, split

**Price** : \$ 1,370,000  
**Land Size** : 370 sqm  
**View** : <https://www.mountviewre.com.au/sale/nsw/western-sydney/schofields/residential/house/7600408>

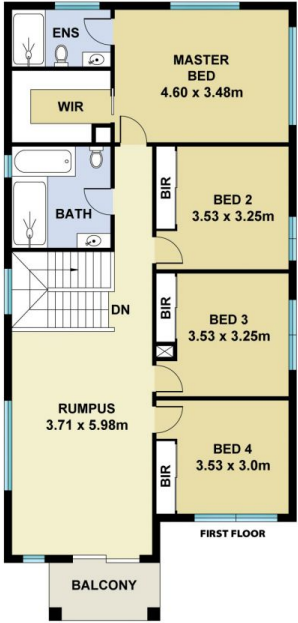
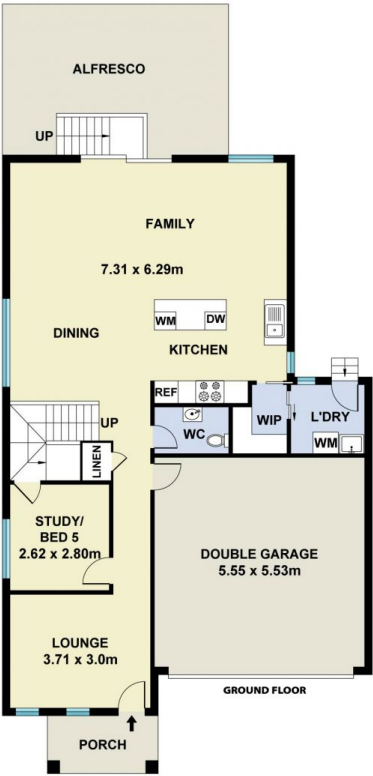
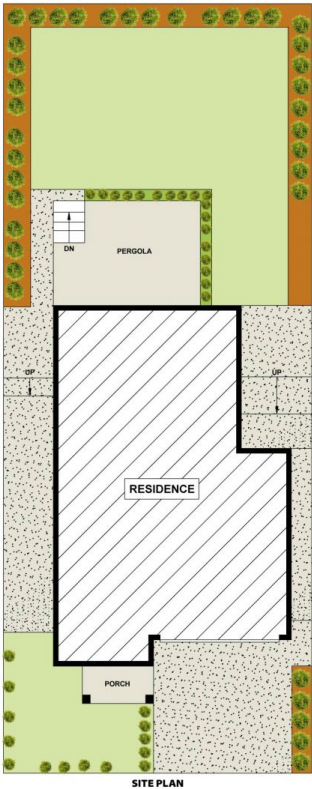


**Hesh Rasitha**  
02 8883 3592



**Ravi Goyal**  
02 8883 3592

<https://www.mountviewre.com.au>



This floorplan including furniture, fixture measurements and dimensions are approximate and for illustrative purposes only. All enquiries must be directed to the agent, vendor or party representing this floor plan

34 BOUNDARY ROAD TALLAWONG

