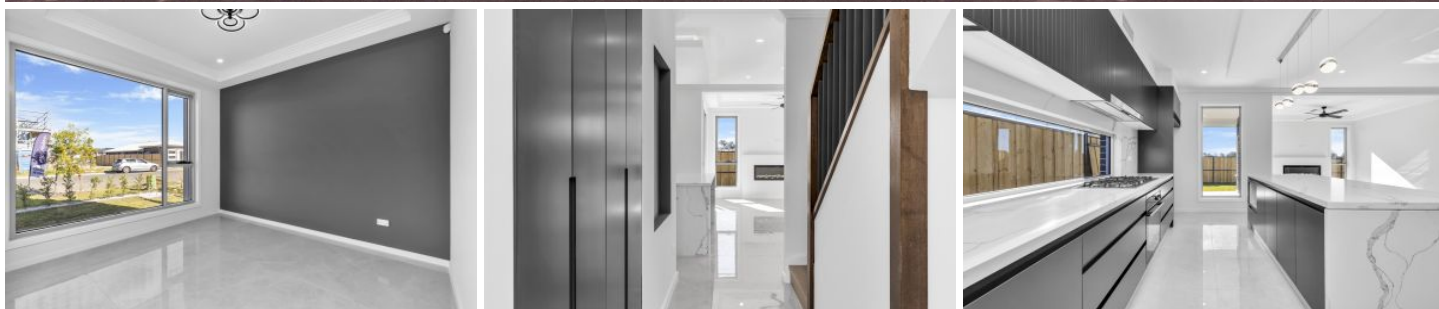


Mountview_{RE}



14 Tori Street Box Hill NSW

5 3 2

Highly Positioned with Mountain Views

Mountview RE is proud to present this stunningly sophisticated brand-new family home, situated in a highly desirable location that offers the absolute best of Box Hill living.

Positioned perfectly within a short drive to Carmel Village Shopping Center, Rouse Hill Town Centre, and The Rouse Hill Metro Station, as well as being close by to all the upcoming developments that Box Hill has to offer such as The New Town Centre, Primary Schools, and upcoming Sports fields.

Featuring:

~ Modern Rendered Facade, Smart Keyless security main

Price : \$ 1,435,000
Land Size : 312 sqm
View : <https://www.mountviewre.com.au/sale/nsw/western-sydney/box-hill/residential/house/7585042>

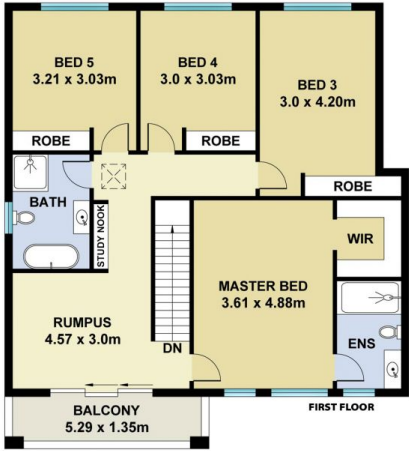
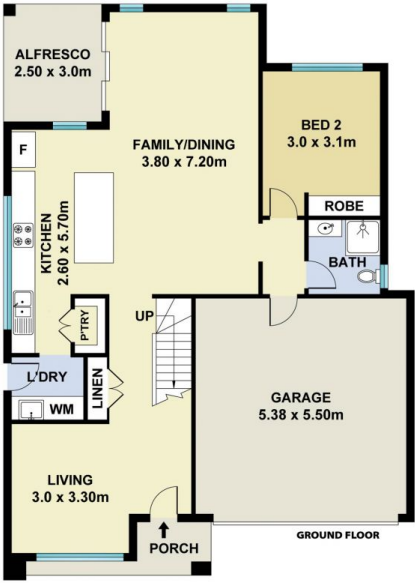


Inder Nirman
02 8883 3592



Raman Brar
02 8883 3592

<https://www.mountviewre.com.au>



This floorplan including furniture, fixture measurements and dimensions are approximate and for illustrative purposes only. All enquiries must be directed to the agent, vendor or party representing this floor plan

14 TORI STREET BOX HILL

