




Mountview_{RE}



6 Teatree Avenue Marsden Park NSW

5  **3**  **2** 

Mountview RE proudly presents - This stunning modern family home situated in the sought-after estate of "Elara" Marsden Park and offers a luxurious and comfortable lifestyle.

As you enter the property, you will be greeted by a spacious and light-filled open plan living and dining area, which seamlessly flows into the modern kitchen featuring stone benchtops, gas cooking, stainless steel appliances, and ample storage space. The dining area leads out to a beautifully landscaped low maintenance backyard.

This double-storey home boasts five generously sized bedrooms, all with built-in robes and ceiling fans, and the master bedrooms featuring a large walk-in robe and an elegant ensuite with a double vanity. The other three bedrooms share a well-appointed family bathroom with a

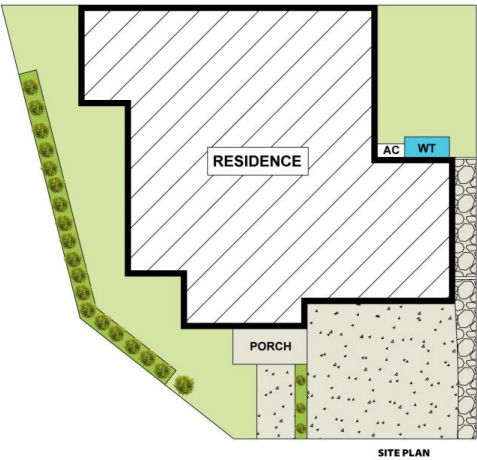
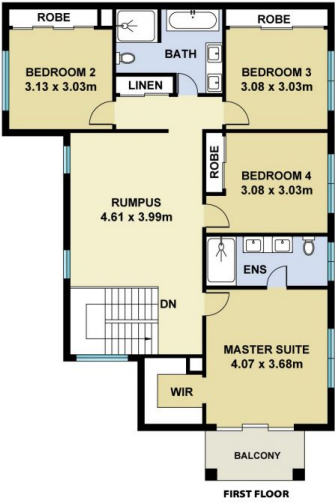
Price : \$ 1,100,000
Land Size : 287 sqm
View : <https://www.mountviewre.com.au/sale/nsw/western-sydney/marsden-park/residential/se-mi-detached/7546567>



Vic Tamber
02 8883 3592



Malwinder Pandher
02 8883 3592



This floorplan including furniture, fixture measurements and dimensions are approximate and for illustrative purposes only. All enquiries must be directed to the agent, vendor or party representing this floor plan

6 TEATREE AVENUE MARSDEN PARK

