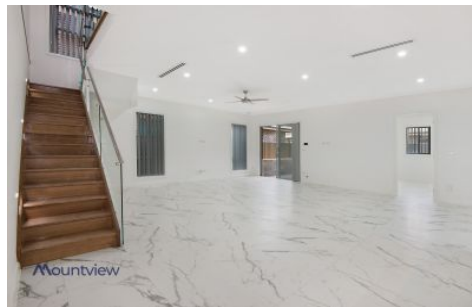
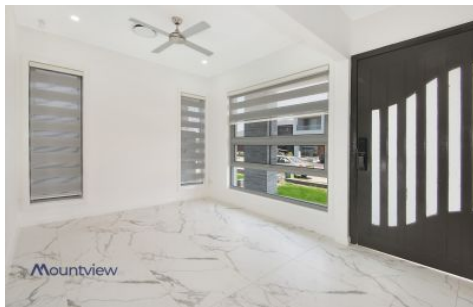





# Mountview<sub>RE</sub>



**12 Feiney Street Marsden Park NSW**

**4**  **5**  **2** 

Mountview RE is proud to present this exceptional brand new 4 bedroom home. This home offers 4 Bedrooms, 5 Bathrooms and a double remote controlled garage.

A full bedroom suite available on ground floor, a media room plus 2nd full bathroom.

3 double size Bedrooms, 3 bathrooms plus spacious rumpus room upstairs.

The spacious, contemporary kitchen is combined with an open plan family and dining area. As you walk through the front this home also has the option of a formal lounge area or open study/home office.

It offers the luxury of having high ceilings, ducted air conditioning and an alarm system. It is beautifully finished with floor to ceiling tiles in the bathrooms, laminate flooring

**Land Size** : 350 sqm

**View** : <https://www.mountviewre.com.au/lease/nsw/western-sydney/marsden-park/residential/house/7521725>



**Mvre Rentals**  
**02 8883 3592**



**Malwinder Pandher**  
**02 8883 3592**

<https://www.mountviewre.com.au>