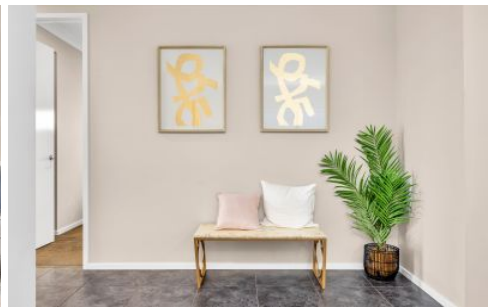


Mountview_{RE}



8 Whipper Street Box Hill NSW

4 2 2

Mountview RE is proud to present this spacious single-level family home perfectly positioned on the high side of a quiet street, boasting plenty of natural light and an open-plan living floorplan.

Prominently positioned in Box Hill you will be a few minutes drive to local schools, and buses & also an 8-minute drive to the Rouse Hill Town Centre shopping, dining, entertainment, T-Way Bus services, and Metro Rail Link.

Quality Features Include;

- ~ Formal lounge/home office
- ~ Sun-filled large open-plan living and dining leading out to the outdoor entertaining area
- ~ Impressive kitchen features a stone benchtop, gas cooking, stainless steel appliances, subway tile splash-back, walk-in pantry, and ample cupboard space

Price : \$ 1,205,000
Land Size : 366 sqm
View : <https://www.mountviewre.com.au/sale/nsw/western-sydney/box-hill/residential/house/7462810>

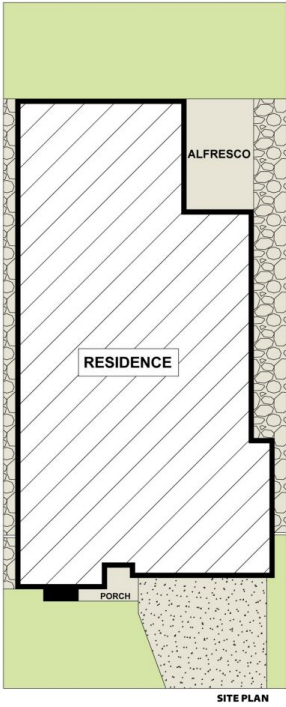
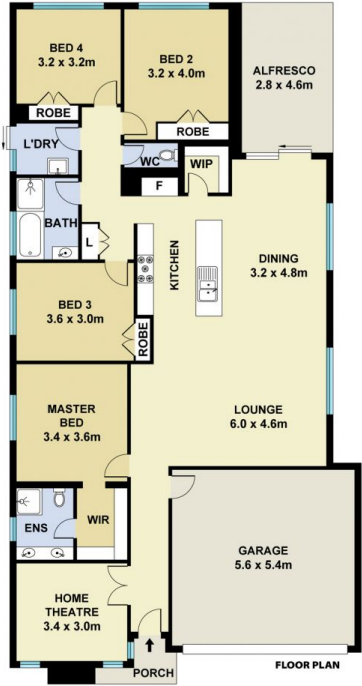


Inder Nirman
02 8883 3592



Malwinder Pandher
02 8883 3592

<https://www.mountviewre.com.au>



This floorplan including furniture, fixture measurements and dimensions are approximate and for illustrative purposes only. All enquiries must be directed to the agent, vendor or party representing this floor plan

8 WHIPPER STREET BOX HILL

