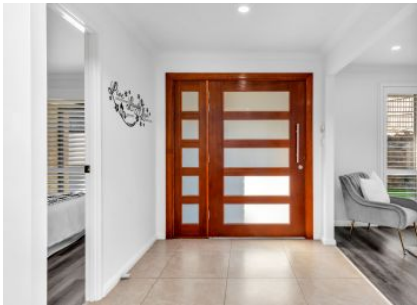


Mountview^{RE}



28 Patriot Place Rouse Hill NSW

5  2  2 

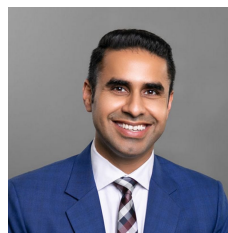
Nestled in the heart of Rouse Hill, this stunning property on 28 Patriot St offers a perfect blend of luxury, comfort, and convenience. The house has been designed to meet the highest standards of modern living and features a range of amenities that will suit any family's needs. This home is freshly painted, with new bathrooms, flooring, plantation shutters, colourbond fence and many more.

The house boasts a spacious open-plan living area that seamlessly flows from the living room to the dining area and into the kitchen. The kitchen is well-appointed with high-quality stainless steel appliances, stone benchtops, and ample storage space. The living room features large windows that flood the space with natural light, making it perfect for entertaining or relaxing with family.

This beautiful home offers five generously sized bedrooms,

Price : \$ 1,560,000

View : <https://www.mountviewre.com.au/sale/nsw/hills/rouse-hill/residential/house/7453403>



Raman Brar
02 8883 3592



Malwinder Pandher
02 8883 3592



This floorplan including furniture, fixture measurements and dimensions are approximate and for illustrative purposes only. All enquiries must be directed to the agent, vendor or party representing this floor plan

28 PATRIOT PLACE ROUSE HILL

