

53 Sanctuary Drive Beaumont Hills NSW

6 4 2

Mountview RE is proud to present this large family home commanding an elevated position in Beaumont Hill's best locations. From the moment you walk in through the entry doors into the spacious foyer of this residence, you will feel the quality of the design and build. Boasting a collection of dual living areas, the home is ideal for the growing family.

You will love the convenience, bus stop at door step, minutes' walk to Beaumont Village, high-performing local schools, parks and reserves and Kellyville Station plus with-in close proximity to the Norwest Business Park, M2 & M7 motorways.

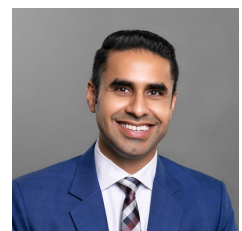
Property Features:

- ~ Spacious formal lounge and dining area
- ~ High ceilings with designer cornices

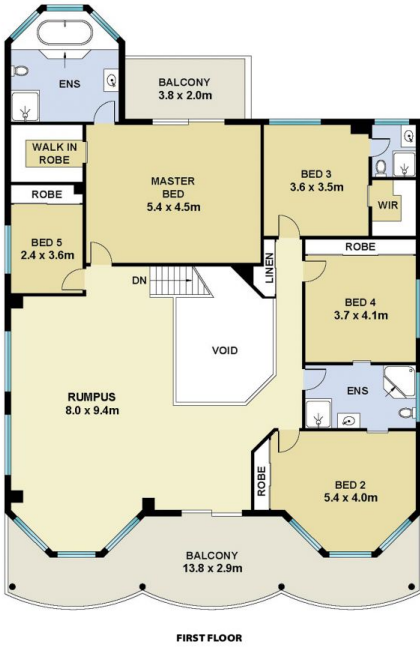
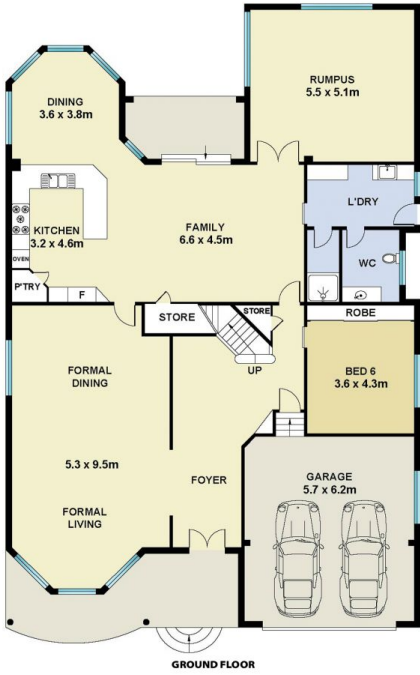
Price : \$ 2,000,000
Building Size : 600 sqm
Land Size : 597 sqm
View : <https://www.mountviewre.com.au/sale/nsw/hills/beaumont-hills/residential/house/7430588>



Malwinder Pandher
02 8883 3592



Raman Brar
02 8883 3592



This floorplan including furniture, fixture measurements and dimensions are approximate and for illustrative purposes only. All enquiries must be directed to the agent, vendor or party representing this floor plan

53 SANCTUARY DRIVE BEAUMONT HILLS

