

Mountview_{RE}



33 Yancannia Terrace Glenwood NSW

3 2 1

Mountview RE is proud to present this freshly painted throughout spacious single level gorgeous family home in a fantastic location on a 434sqms land with a peaceful short stroll through the park to the Glenwood Shops, Caddies Creek Primary School and Childcare Centre at Wardia Street.

Price : \$ 1,280,000
Land Size : 434 sqm
View : <https://www.mountviewre.com.au/sale/nsw/western-sydney/glenwood/residential/house/7269986>

Boasting:

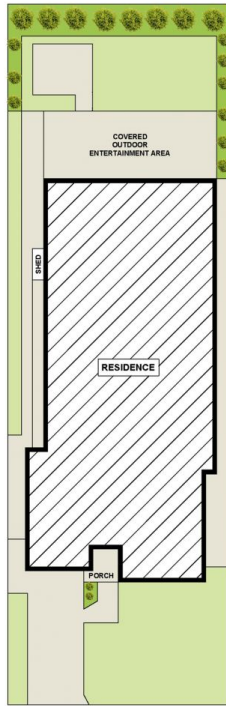
- ~ High position overlooking the park
- ~ Formal lounge & dining areas
- ~ Master bedroom with walk-in wardrobe and ensuite bathroom
- ~ All bedrooms with built in wardrobes and ceiling fans
- ~ Kitchen with gas cooking, dishwasher and plenty of cupboard space
- ~ Open plan family/meals room and rumpus area
- ~ Large main bathroom



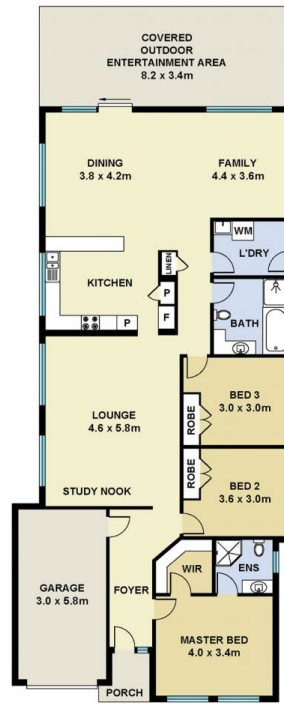
Malwinder Pandher
02 8883 3592



Ravi Goyal
02 8883 3592



SITE PLAN



FLOOR PLAN

This floorplan including furniture, fixture measurements and dimensions are approximate and for illustrative purposes only. All enquiries must be directed to the agent, vendor or party representing this floor plan

33 YANCANNIA TERRACE GLENWOOD

