

Mountview_{RE}



47/26-30 Hassal Street Parramatta NSW

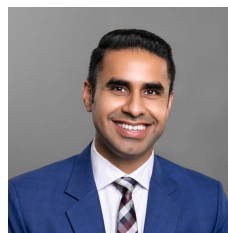
2  2  1 

Mountview RE is proud to present this luxurious apartment in the heart of Parramatta, with the most exciting dining and entertainment venues at your doorstep with views of Parramatta CBD. Within a short stroll to the railway station, bus interchange hub, Westfield Shopping town, parks, reputable schools, restaurants & cafes.

Price : \$ 570,000

View : <https://www.mountviewre.com.au/sale/nsw/parramatta/parramatta/residential/apartment/7268915>

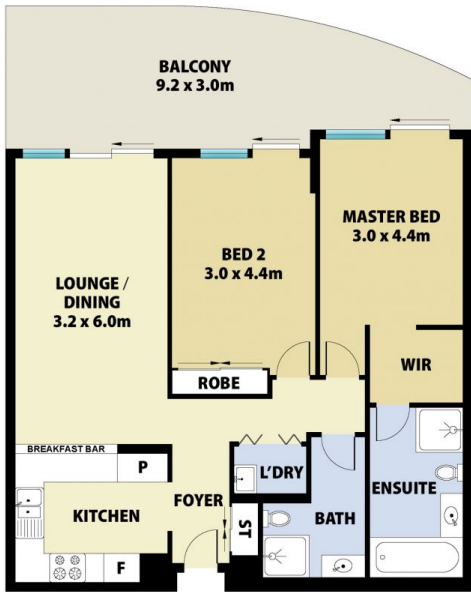
- Light-filled kitchen with gas cooking
- Both bedrooms have private balconies & the main bedroom features an en-suite with a walk-in robe.
- Combined dining and living open to a large entertainer's balcony
- Separate internal laundry
- Security car space with swipe card entrance & lift access
- This building offers GYM, SAUNA & SPA
- Close to Parramatta station, Light rail, bus stops, and Parramatta Wharf



Raman Brar
02 8883 3592



Inder Nirman
02 8883 3592



This floorplan including furniture, fixture measurements and dimensions are approximate and for illustrative purposes only. All enquiries must be directed to the agent, vendor or party representing this floor plan

847/26-30 HASSALL STREET PARRAMATTA

