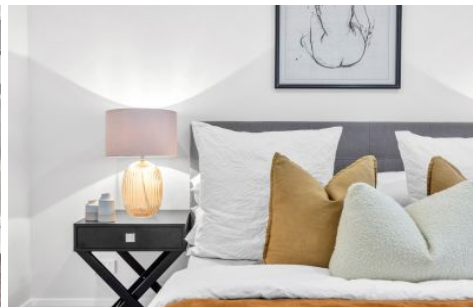
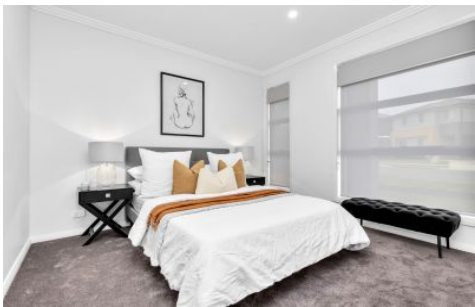


# Mountview<sup>RE</sup>



## 33 Pleasance Street Box Hill NSW

5 🚗 3 🚗 2 🚗

Mountview RE is proud to present this striking, spacious, and tastefully, Brand New single-story family home located in the fastest-growing northwest suburb of Box Hill bordering Rouse Hill. From the moment you walk through the front wide entry door, you will be impressed with this superbly designed and executed custom-built single-level home. With all the quality inclusions and attention to detail, this home offers a growing family or the downsizer all the luxuries you yearn for without compromise.

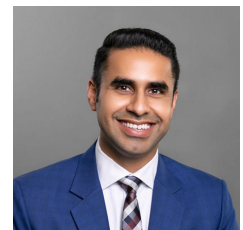
### Boasting:

- ~ Very Rare 4 bedrooms with ensuite & wardrobes
- ~ Modern facade with rendered feature & colorbond Roof
- ~ 2.7M high ceiling throughout with 3-Step Cornice & 2340mm high doors throughout to match the high ceilings
- ~ Finger Pull, Soft close drawers & cabinets, 90mm 5 burner cooktop, Oven, 40mm designer stone benchtops

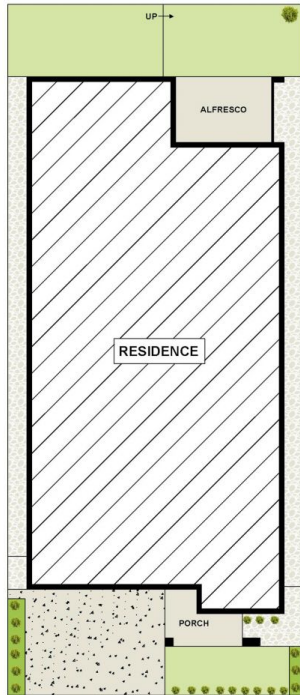
**Price** : \$ 1,400,000  
**Land Size** : 375 sqm  
**View** : <https://www.mountviewre.com.au/sale/nsw/western-sydney/box-hill/residential/house/7268839>



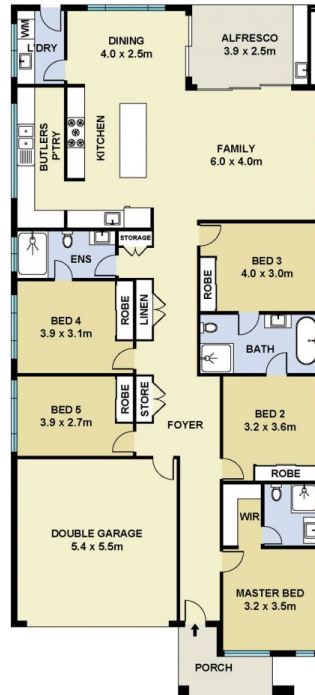
**Inder Nirman**  
02 8883 3592



**Raman Brar**  
02 8883 3592



SITE PLAN



FLOOR PLAN

*This floorplan including furniture, fixture measurements and dimensions are approximate and for illustrative purposes only. All enquiries must be directed to the agent, vendor or party representing this floor plan*

33 PLEASANCE STREET BOX HILL

