

Mountview^{RE}



14 Beldale Street Box Hill NSW

5 🛏 4 🚿 2 🚗

Mountview RE is proud to present that something special you have been searching for. With over 50 Sq of living space proudly sprawled across an expansive 628sqm block, homes of this calibre rarely come to market.

Absolutely everything in this family home has been hand selected by the meticulous owners to ensure only the highest calibre of fittings and fixtures have been used. Don't settle for second best, be sure to add 14 Beldale St to your inspection list.

Featuring:

- ~ Beautifully landscaped front and rear yards, pebblecrete driveway and wide front entry door with smart access
- ~ Acrylic rendering to the complete exterior
- ~ Sunny and spacious floorplan with a number of

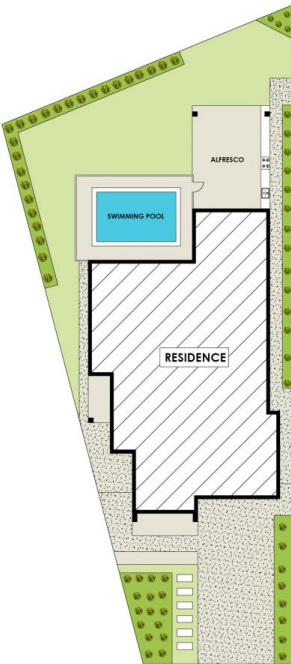
Price : \$ 1,780,000
Land Size : 628 sqm
View : <https://www.mountviewre.com.au/sale/nsw/western-sydney/box-hill/residential/house/7237350>



Hesh Rasitha
02 8883 3592



Inder Nirman
02 8883 3592



This floorplan including furniture, fixture measurements and dimensions are approximate and for illustrative purposes only. All enquiries must be directed to the agent, vendor or party representing this floor plan

14 BELDALE STREET GABLES

