

Mountview_{RE}



40 Hereford Street Box Hill NSW

4 2 2

Mountview RE is proud to present this family home that offers the ultimate blend of stylish contemporary living and meticulous attention to detail. Only 2- minute's drive to the Upcoming Box Hill Mount Carmel Drive shops, certainly positioned in arguably one of the most sought-after Pockets of Box Hill, called "The Hills Of Carmel".

Price : \$ 1,260,000
Land Size : 309.3 sqm
View : <https://www.mountviewre.com.au/sale/nsw/western-sydney/box-hill/residential/house/7221525>

Boasting:

- ~ Manicured front yard upon arrival
- ~ Master with designer ensuite and walk-in robe
- ~ Open plan dining and Family area adjacent to the kitchen, with large windows overlooking the backyard
- ~ Large and luxurious kitchen with stone benchtops, 900MM gas cooktop, Oven, dishwasher, and butlers pantry
- ~ Additional living space and Built-in study nook upstairs

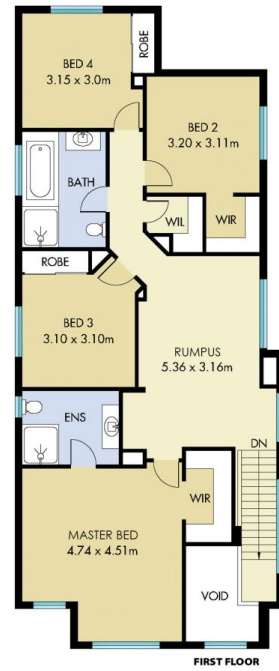
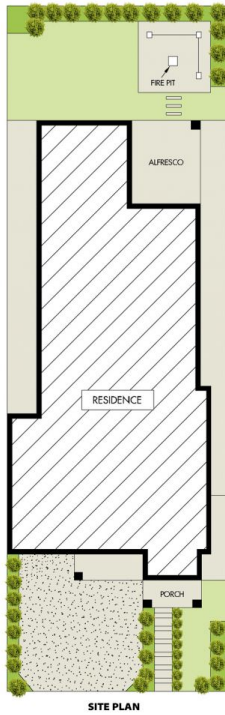


Inder Nirman
02 8883 3592



Ravi Goyal
02 8883 3592

<https://www.mountviewre.com.au>



This floorplan including furniture, fixture measurements and dimensions are approximate and for illustrative purposes only. All enquiries must be directed to the agent, vendor or party representing this floor plan

40 HEREFORD STREET BOX HILL

