

Mountview^{RE}



13/11 Glenvale Avenue Parklea NSW

2 2 2

Mountview RE is proud to present this amazing property situated in a prime location of Parklea, offering an open living plan set within a desirable and active lifestyle complex. You will have plenty of opportunities to enjoy its vast leisure area with tennis courts, outdoor swimming pool, gymnasium and BBQ facilities.

Situated Minutes' walk to the TWay Buses to Parramatta and the city & M7. Just a short distance to Stanhope Gardens shopping centre, numerous Reserves and major arterial roads.

With its own private upper level terrace and abundance of natural light the property delivers warmth and practicality, perfect for investors, first time buyers and down sizers

Some other features

Price : \$ 605,000

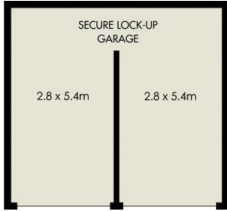
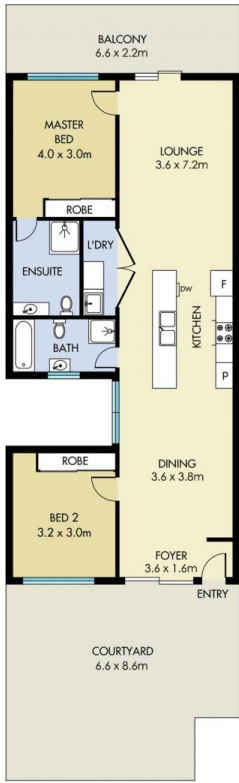
View : <https://www.mountviewre.com.au/sale/nsw/western-sydney/parklea/residential/apartment/7198034>



Ravi Goyal
02 8883 3592



Raman Brar
02 8883 3592



This floorplan including furniture, fixture measurements and dimensions are approximate and for illustrative purposes only. All enquiries must be directed to the agent, vendor or party representing this floor plan

13/11 GLENVALE AVENUE PARKLEA

