

Mountview_{RE}



55 Rosebery Road Kellyville NSW

6 3 3

Mountview RE is proud to present this spacious North facing family home boasting an expansive floorplan located in the zoned for Sherwood Ridge Public School, Kellyville High School and walk to William Clarke College.

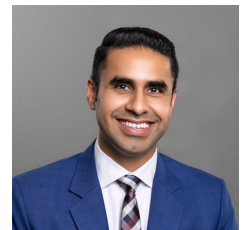
Price : \$ 1,888,000
Land Size : 655 sqm
View : <https://www.mountviewre.com.au/sale/nsw/hills/kellyville/residential/house/7165703>

Featuring:

- ~ Massive formal lounge and dining room
- ~ Multiple open plan living and dining areas
- ~ Guest bedroom downstairs plus full bathroom downstairs
- ~ Large kitchen with gas cooking, stainless steel appliances and ample cupboard space
- ~ Master bedroom with built in and walk in robes and ensuite with dual vanity
- ~ Three additional bedrooms upstairs, all with built in robes
- ~ Large rumpus area upstairs
- ~ Large family bathroom with separate bath, shower and W/C

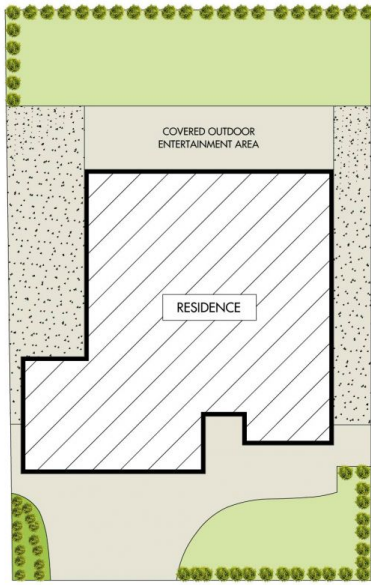


Malwinder Pandher
02 8883 3592



Raman Brar
02 8883 3592

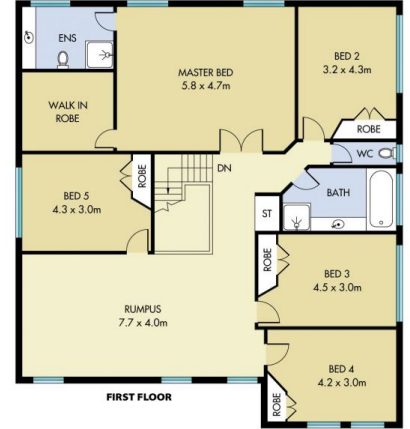
<https://www.mountviewre.com.au>



SITE PLAN



GROUND FLOOR



FIRST FLOOR

This floorplan including furniture, fixture measurements and dimensions are approximate and for illustrative purposes only. All enquiries must be directed to the agent, vendor or party representing this floor plan

55 ROSEBERY ROAD KELLYVILLE

