

Mountview_{RE}



23 Wyena Road Pendle Hill NSW

6 3 6

Behind the gorgeous facade, this stunning house boasts a splendid array of period features and modern luxuries combining to create the perfect inner-suburban lifestyle.

Inviting hallway accesses four large bedrooms and two big bathrooms, elegant formal lounge, stylish main bathroom, superb gourmet timber kitchen with granite bench tops and tiled splash backs.

Delightful open plan living areas adorned in natural light including kitchen/dining/family room, it also has a Teenager Retreat at the back of the house.

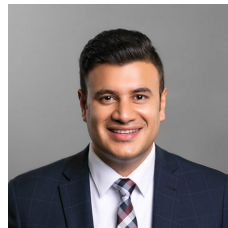
The secondary dwelling consists of 2 Bedrooms and 1 Bathroom which has a rental potential of \$500 per week.

Impressive in every way, this impeccable home resides in an enviable location, a short walk to Pendle Hill Station and shopping village, local schools, parks and amenities.

Price : \$ 1,675,000

Land Size : 727 sqm

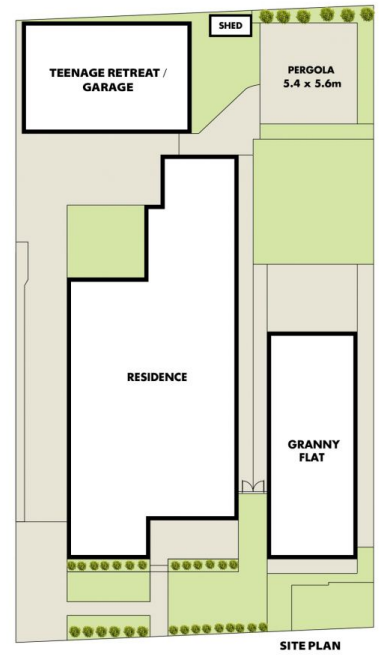
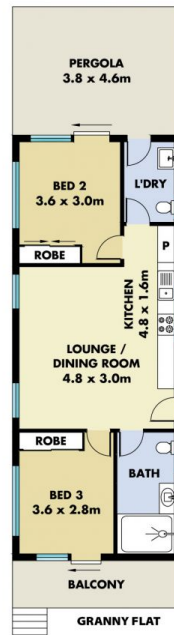
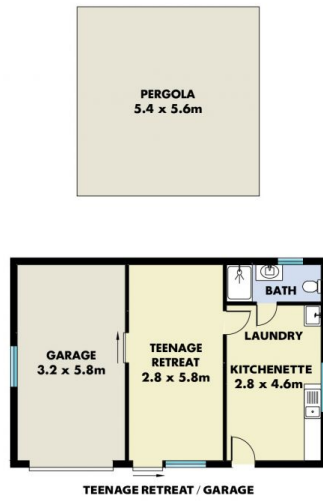
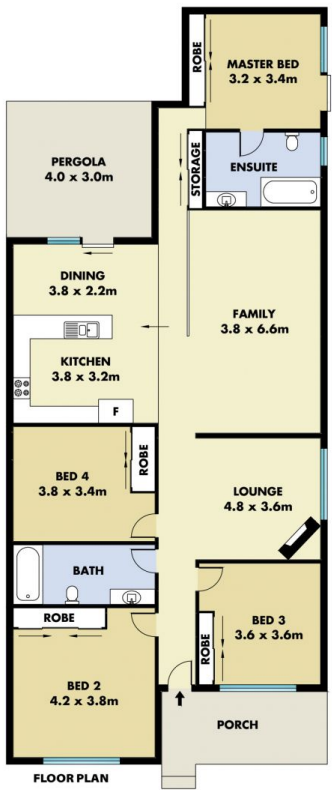
View : <https://www.mountviewre.com.au/sale/nsw/parramatta/pendle-hill/residential/house/6959718>



Rahul Sehgal
02 8883 3592



Malwinder Pandher
02 8883 3592



This floorplan including furniture, fixture measurements and dimensions are approximate and for illustrative purposes only. All enquiries must be directed to the agent, vendor or party representing this floor plan

23 WYENA ROAD PENDLE HILL

