

Mountview^{RE}



9 Bindo Street The Ponds NSW

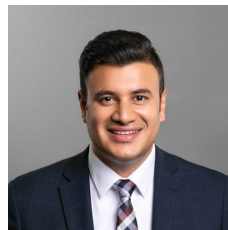
5 4 1

Warm and inviting, Mountview RE is proud to present this East facing architecturally designed spacious family home located in a quiet street, has a plethora of family living space, natural light, and quality finishes. This home offers quality throughout and is sure to satisfy all your family needs from comfort to entertainment. It is a must inspect property to appreciate its qualities and eye to detail finishes.

Located in a prime position with-in moments' walk to Riverbank Public School, The Ponds High School, bus stop, short drive to The Ponds Shopping Centre, Rouse Hill Town Centre, Schofields Train Station and Tallawong Metro.

Additional features include:
~ Combined living and dining area providing an effortless

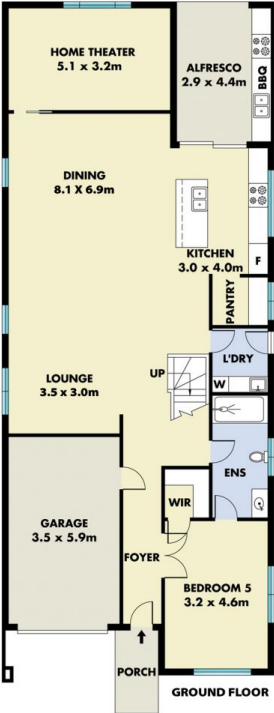
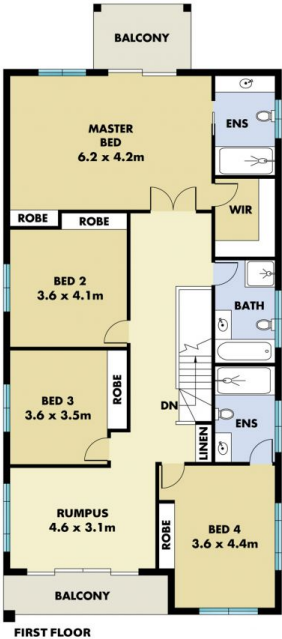
Price : \$ 1,525,000
Land Size : 328 sqm
View : <https://www.mountviewre.com.au/sale/nsw/hills/the-ponds/residential/house/6928147>



Rahul Sehgal
02 8883 3592



Malwinder Pandher
02 8883 3592



This floorplan including furniture, fixture measurements and dimensions are approximate and for illustrative purposes only. All enquiries must be directed to the agent, vendor or party representing this floor plan

9 BINDO STREET THE PONDS

