

Mountview_{RE}



3 Yating Avenue Schofields NSW

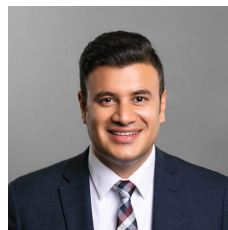
6 3 2

Mountview RE is proud to present this gorgeous family home, situated on an expansive 467m² block in convenient pocket of Schofields. Showcasing multiple living spaces, a large kitchen with butler's pantry and seamless indoor-outdoor living into a covered alfresco area, this property is sure to excite, offering space, comfort and close proximity to all necessary amenities.

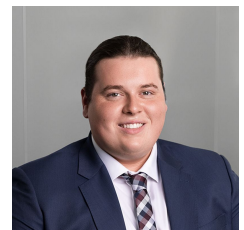
Features:

- King-sized bedrooms; 2 with ensuites. The master bedroom contains a walk-in-wardrobe with the rest having built-in wardrobes.
- 5th bedroom with ensuite downstairs, as well as 6th bedroom / media room.
- Casual living extends via sliding doors to the stunning covered alfresco entertaining area
- The expansive level rear yard providing an additional

Price : \$ 1,580,000
Land Size : 467 sqm
View : <https://www.mountviewre.com.au/sale/nsw/western-sydney/schofields/residential/house/6881914>

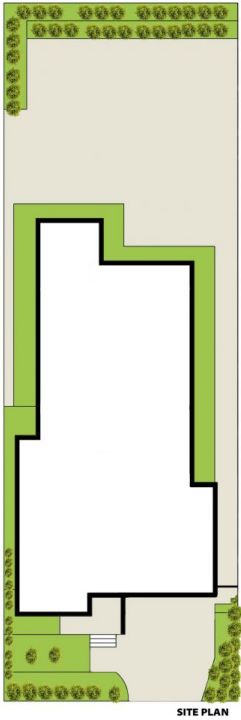
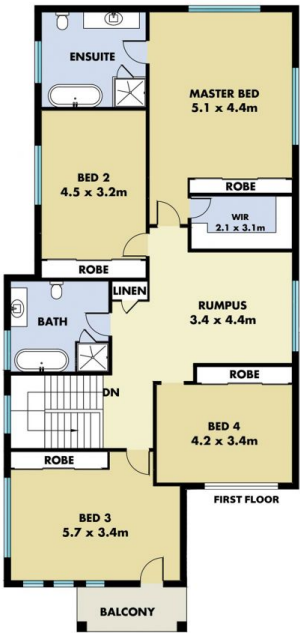
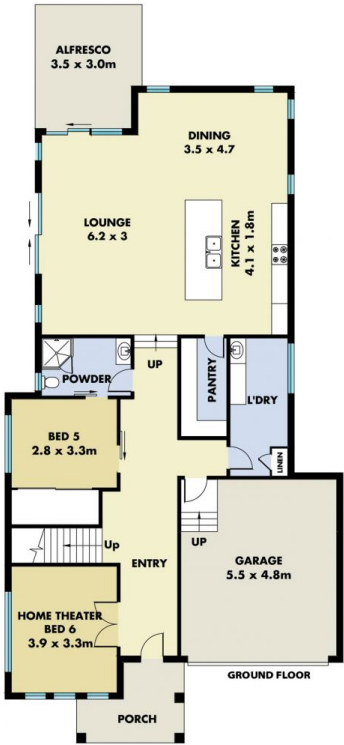


Rahul Sehgal
02 8883 3592



Chet Greatbatch Murphy
02 8883 3592

<https://www.mountviewre.com.au>



This floorplan including furniture, fixture measurements and dimensions are approximate and for illustrative purposes only. All enquiries must be directed to the agent, vendor or party representing this floor plan

3 YATING AVENUE SCHOFIELDS

