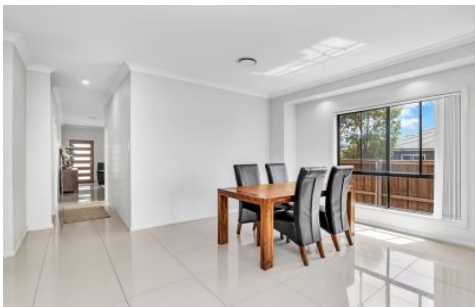


Mountview_{RE}



10 Dowie Drive Claymore NSW

6 4 3

Mountview RE presents this neatly presented home occupies a generous 503sqm block close to shops, school and public transport.

Grannyflat attached at the back of the house

- 2 Bedroom, 1 Bathroom, 1 Garage
- Approximately 60SQm
- High ceilings
- Air conditioning/fans

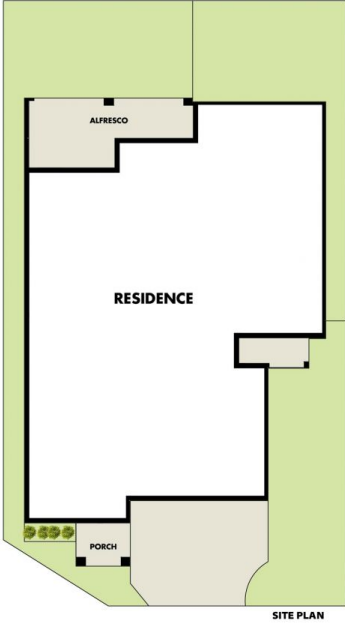
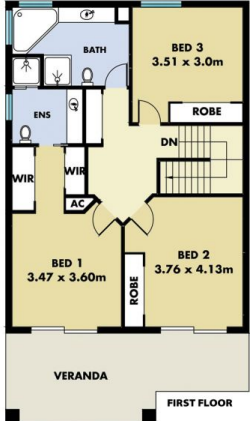
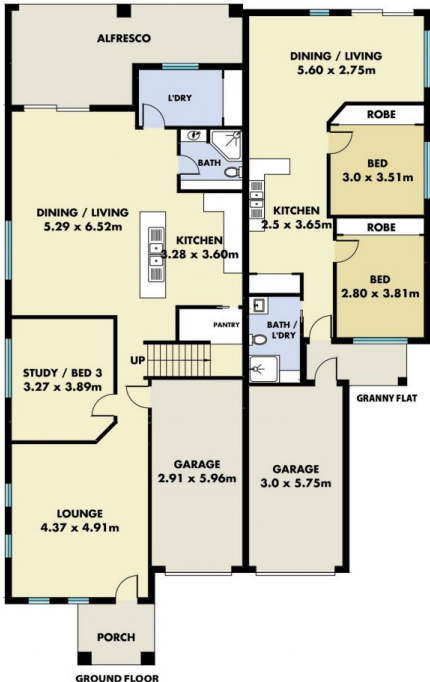
You'll be impressed by the combination of features this property includes:

- Four carpeted bedrooms with built-in mirrored wardrobes
- Two, walk-in and huge ensuite to the main
- Two large open living spaces with adaptable usage
- Tiled throughout
- Two substantial bathrooms in addition to the ensuite, one

Price : \$ 1,125,000
Land Size : 503 sqm
View : <https://www.mountviewre.com.au/sale/nsw/macarthurcamden/claymore/residential/house/6860867>



Malwinder Pandher
02 8883 3592



This floorplan including furniture, fixture measurements and dimensions are approximate and for illustrative purposes only. All enquiries must be directed to the agent, vendor or party representing this floor plan

10 & 10A DOWIE DRIVE CLAYMORE

