

# Mountview<sup>RE</sup>



## 88 Sundowner Parkway Gables NSW

6 🏠 3 🚗 2 🚗

Mountview RE is proud to present this Masterpiece by MOJO Homes, a Large Approx 55 Sq, Six bedrooms family home on 622 Sqm Land Size, Certainly positioned in arguably one of the most sought-after streets in Gables.

This fully Upgraded-double-story residence offers space, quality, and style with generous living spaces, 2 Master Bedrooms with ensuites, and Walk-in wardrobes. Then you have this separate home theatre, fantastic for movie nights.

Main Features to highlight:

- ~ Attractive Facade with Wide front door Entry & beautifully Landscaped
- ~ Large balcony with uninterrupted views
- ~ Home office downstairs could be used as 7th Bedroom
- ~ Texture rendered all sides
- ~ Two extra Powder rooms, one on the ground floor & one

**Price** : \$ 2,400,000  
**Building Size** : 503.41 sqm  
**Land Size** : 622 sqm  
**View** : <https://www.mountviewre.com.au/sale/nsw/-/gables/residential/house/6813275>

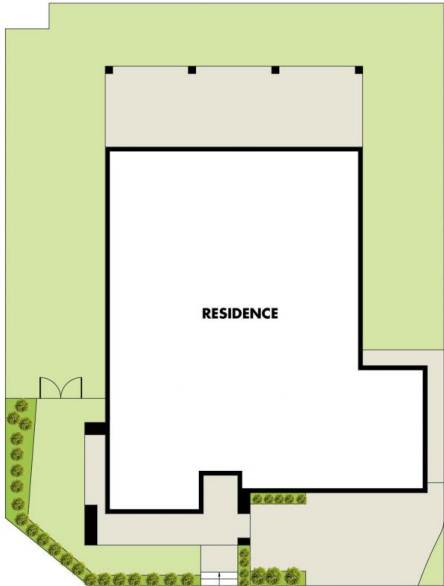


**Inder Nirman**  
02 8883 3592

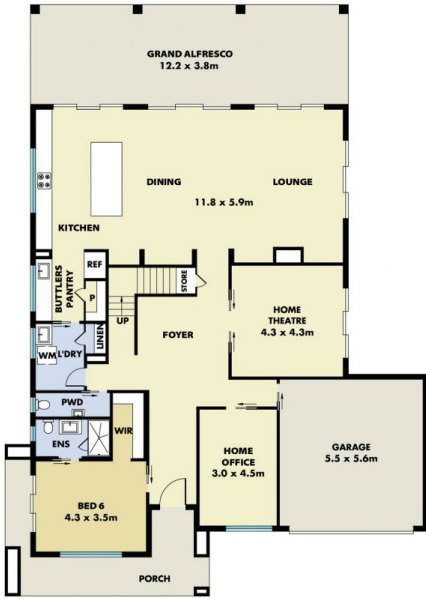


**Malwinder Pandher**  
02 8883 3592

<https://www.mountviewre.com.au>



SITE PLAN



GROUND FLOOR



FIRST FLOOR

*This floorplan including furniture, fixture measurements and dimensions are approximate and for illustrative purposes only. All enquiries must be directed to the agent, vendor or party representing this floor plan*

88 SUNDOWNER PARKWAY BOX HILL

