

Mountview_{RE}



80 Rutherford Avenue Kellyville NSW

3  2  2 

Built to a very high standard, this luxurious townhouse is filled with high-end inclusions. Located within minutes to bus stops and the upcoming Norwest Rail Link your family will love the way the fastidious owners have maintained the property.

View : <https://www.mountviewre.com.au/lease/nsw/hills/kellyville/residential/townhouse/6729277>

Boasting:

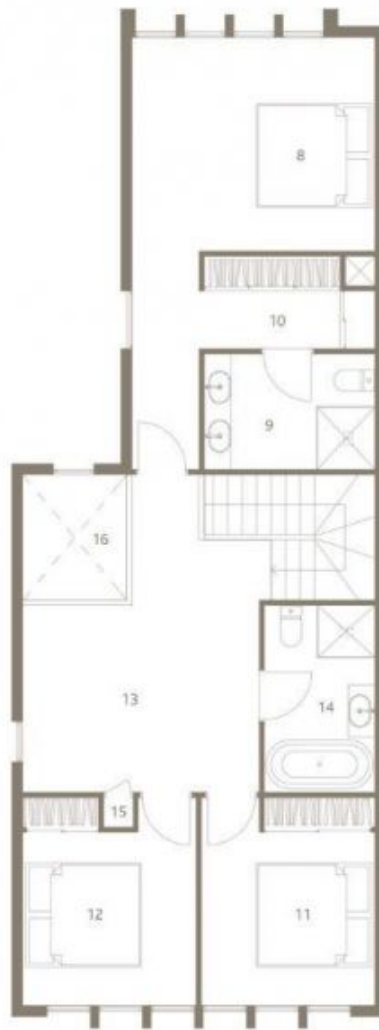
- Three light-filled bedrooms with floor to ceiling windows, all with built-in robes
- Enormous master suite with a ample robe space and large ensuite
- Newly updated quality timber flooring throughout - no carpets!
- Modern kitchen with gas cooktop, glass splashback, stone bench tops and breakfast bar
- Open plan lounge and dining room, plus additional



Mvre Rentals
02 8883 3592



Georgette Siew
02 8883 3592



First Floor



Ground Floor

THE PARC

KELLYVILLE - SYDNEY

Sunland Group

ESTABLISHED
1994

[TYPE E] LOTS 2,9,16

Ground Floor Area 107m² First Floor Area 86m² Total Area 193m²

0 5m

1 Living | 2 Dining | 3 Kitchen | 4 Garage | 5 Powder Room | 6 Laundry | 7 Hall | 8 Bedroom 1 | 9 Ensuite
10 Walk in Robe | 11 Bedroom 2 | 12 Bedroom 3 | 13 Study | 14 Bathroom | 15 Linen | 16 Void | 17 Store

Memorial Ave Kellyville New South Wales 2155 Telephone 1800 559 978 sunlandgroup.com.au

All floor area measured to outside face of exterior walls and centre of party walls (including garage). First floor plans exclude area of internal stairs and voids (as measured at ground floor). All external areas (terraces, balconies, external entry porches and patios) are excluded from area calculation. All measurements have been taken in the preparation of these floor plans. To the best of our knowledge, no relevant information has been omitted. However Sunland Group Limited and it's approved agents/brokers all liability should any information or matter concerned herein differ from the contract of sale or the actual constructed development. All information is correct at the time of printing. 10/1/06