

# Mountview<sub>RE</sub>



## 17 Karri Place Parklea NSW

3 2 1

Mountview RE is proud to present this freshly painted family home that ticks all the boxes. Located in a cul-de-sac location in one of the most popular pockets of Parklea close to the M7 Motorway, T-Way Buses, Stanhope Gardens Shopping Centre and Blacktown Leisure Centre.

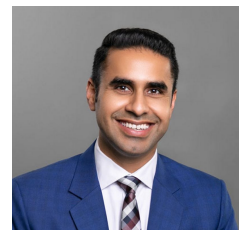
**Price** : \$ 968,000  
**Land Size** : 291 sqm  
**View** : <https://www.mountviewre.com.au/sale/nsw/western-sydney/parklea/residential/house/6455432>

### Boasting:

- Three great sized rooms all with built ins and the master with ensuite
- Open plan living, family and dining areas
- Good sized modern kitchen with stainless steel appliances, gas cooking, dishwasher and ample cupboard space



**Malwinder Pandher**  
02 8883 3592



**Raman Brar**  
02 8883 3592

<https://www.mountviewre.com.au>

# 17 Karri Place, Parklea

Floor Area Sizes

Internal 111m<sup>2</sup>

Garage 18m<sup>2</sup>

External 41m<sup>2</sup>

Total 170m<sup>2</sup>

Block Size 291m<sup>2</sup>

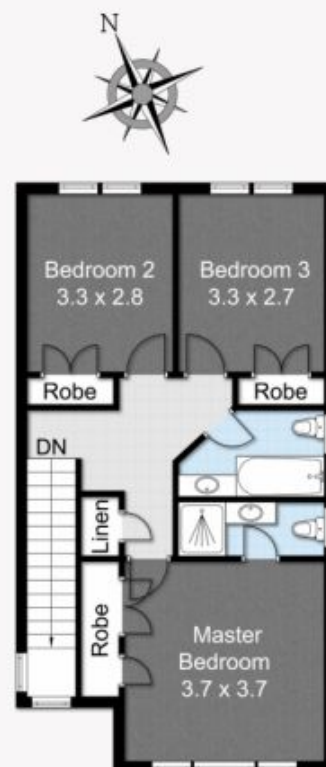
Mountview<sub>RE</sub>



SITE PLAN



GROUND FLOOR



FIRST FLOOR

Floor Plans designed for marketing purposes only and are indicative to approximate size and structure.  
All dimensions are approximate. Not drawn to exact scale and no liability will be accepted.

Marketing Plan designed by [www.shoot2sell.tv](http://www.shoot2sell.tv) **Shoot2Sell**  
Photography | Drone | Video



3



2



1



170 m<sup>2</sup>



291 m<sup>2</sup>