

Mountview_{RE}



13 Gainsford Drive Kellyville NSW

4 3 2

Mountview RE is proud to present this very neat & tidy, well looked after gorgeous family home located at a very convenient and most desired location of Kellyville.

Immaculate split-level family home offers plenty of light-filled living space for growing families. The ground floor provides versatility in living with the inclusion of both formal and informal spaces carefully cantered around a kitchen with a gas cooktop. A large downstairs family area opens to a generous covered alfresco, follows on to a beautiful pool perfect for entertaining family and friends.

Upstairs consists of four well-sized bedrooms all with Built-in Wardrobes, the master suite also includes an ensuite & a Large Balcony. With the Kellyville metro, a short 650m walk away and easy access to buses, shops, and schools.

Price : \$ 1,710,000
Land Size : 555 sqm
View : <https://www.mountviewre.com.au/sale/nsw/hills/kellyville/residential/house/6440030>



Inder Nirman
02 8883 3592



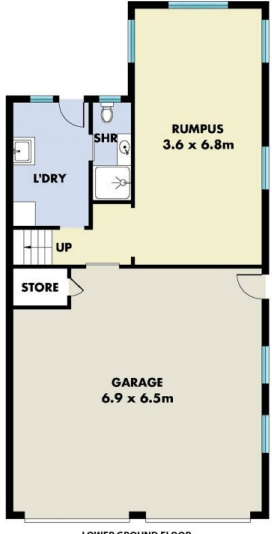
Malwinder Pandher
02 8883 3592



SITE PLAN



FIRST FLOOR



LOWER GROUND FLOOR

This floorplan including furniture, fixture measurements and dimensions are approximate and for illustrative purposes only. All enquiries must be directed to the agent, vendor or party representing this floor plan

13 GAINSFORD DRIVE KELLYVILLE

