

Mountview_{RE}



14 Guinevere Street Schofields NSW

4 2 2

Mountview RE is proud to present this NEARLY NEW architect-designed Stunning Single story family home on 450 SQM within walking distance to Schofields train station. Filled with premium quality fittings and fixtures throughout, we guarantee you won't find anything else like it in the area.

Price : \$ 1,182,500
Land Size : 450 sqm
View : <https://www.mountviewre.com.au/sale/nsw/western-sydney/schofields/residential/house/6432085>

Boasting:

- Wide Double door Touchpad/ Pinpad Entry
- Practical and spacious Open floorplan with numerous living areas and plenty of sunlight throughout
- King-sized master bedroom with walk-in Wardrobe & Ensuite
- 40mm stone benchtops with waterfall edges, polytech soft-close cabinetry, Bulkhead with 3 Pendant lights over the Kitchen Island, 900mm stainless steel appliances, gas

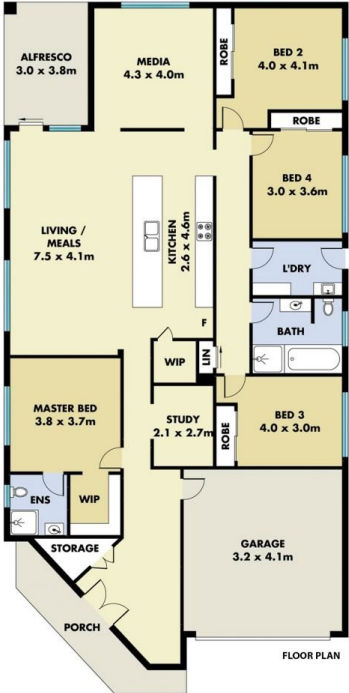


Inder Nirman
02 8883 3592

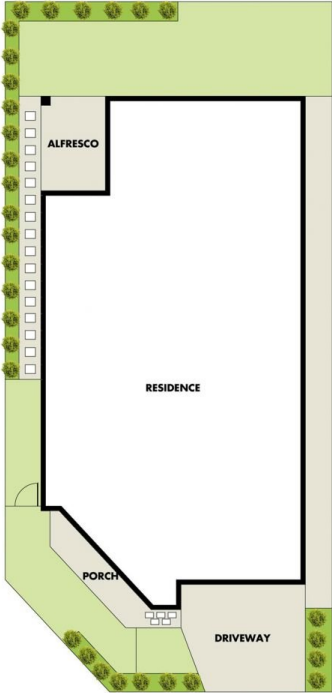


Raman Brar
02 8883 3592

<https://www.mountviewre.com.au>



FLOOR PLAN



SITE PLAN

This floorplan including furniture, fixture measurements and dimensions are approximate and for illustrative purposes only. All enquiries must be directed to the agent, vendor or party representing this floor plan

14 GUINEVERE STREET SCHOFIELDS

