

Mountview_{RE}



101 Yating Avenue Schofields NSW

5 4 2

Mountview RE is proud to present this one year young custom designed 40square gorgeous family home. Showcasing a superb selection of casual and formal living areas, an ultra-modern kitchen with butler's pantry plus a seamless fusion of indoor/outdoor living to the covered alfresco entertaining area. Proudly sitting on an easy care 386m² level block within a quiet yet convenient pocket of Schofields.

Just a quick drive to Schofields Train Station, Tallawong Metro Station, Rouse Hill Town Centre, local schools, cafes and restaurants.

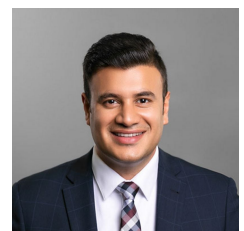
Property Features:

- ~ Formal lounge room
- ~ 4 king size bedrooms upstairs, 2 with ensuites, master with walk-n-robe and access to front balcony

Price : \$ 1,171,000
Building Size : 368 sqm
Land Size : 386 sqm
View : <https://www.mountviewre.com.au/sale/nsw/western-sydney/schofields/residential/house/5986061>

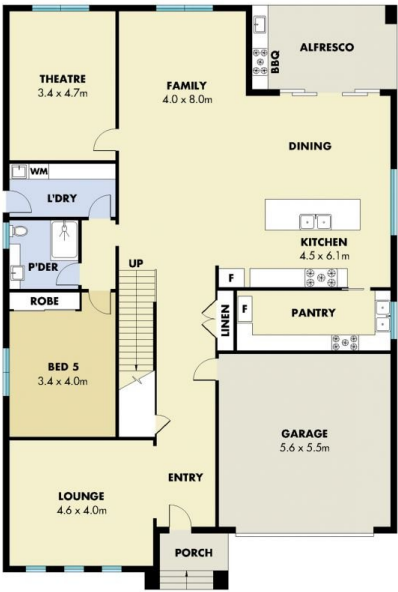


Malwinder Pandher
02 8883 3592



Rahul Sehgal
02 8883 3592

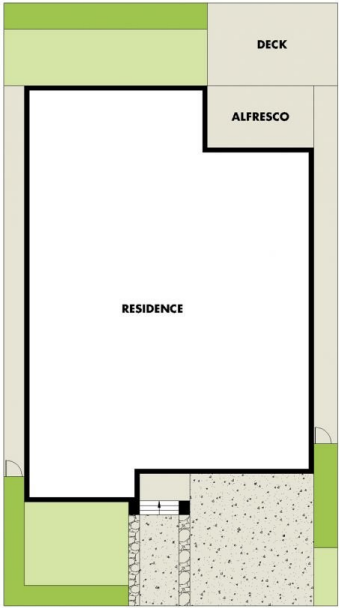
<https://www.mountviewre.com.au>



GROUND FLOOR



FIRST FLOOR



SITE PLAN

This floorplan including furniture, fixture measurements and dimensions are approximate and for illustrative purposes only. All enquiries must be directed to the agent, vendor or party representing this floor plan

101 YATING AVENUE SCHOFIELDS

0 1 2 3 4 5

