

# Mountview<sub>RE</sub>



60 Foxall Road North Kellyville NSW

5 🛏 3 🚿 2 🚗

Mountview RE is proud to present this North-East facing magnificent home which is enhanced by a wonderfully elevated position in one of North Kellyville's most desirable locations.

This architecturally designed home boasts a versatile floor plan that includes multiple living and dining areas. Its obvious no expense has been spared in the making of this masterpiece.

Features:

- ~ Generous formal lounge at the front with 3.2 meter high LED drop ceiling
- ~ Gourmet kitchen with sparkling integrated European stainless-steel appliances, expansive 60mm stone waterfall benchtops, butler's, soft-close drawers, glass splashbacks

**Price** : \$ 1,290,000  
**Building Size** : 340 sqm  
**Land Size** : 360 sqm  
**View** : <https://www.mountviewre.com.au/sale/nsw/hills/north-kellyville/residential/house/5902265>

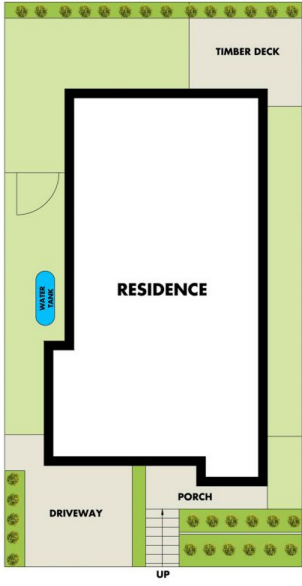
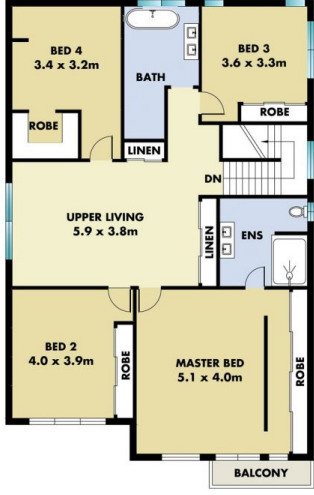


**Inder Nirman**  
02 8883 3592



**Malwinder Pandher**  
02 8883 3592

<https://www.mountviewre.com.au>



*This floorplan including furniture, fixture measurements and dimensions are approximate and for illustrative purposes only. All enquiries must be directed to the agent, vendor or party representing this floor plan*

60 FOXALL ROAD NORTH KELLYVILLE

