



13 Guernsey Way Stanhope Gardens NSW

4 2 2

Mountview RE is proud to present this gorgeous family home ready to move into without a cent to be spent. The spacious yet practical floorplan allows for an abundance of natural light and your family will love the convenience of a playground in front with bus stops at your doorstep.

Price : \$ 935,000
Land Size : 642 sqm
View : <https://www.mountviewre.com.au/sale/nsw/western-sydney/stanhope-gardens/residential/house/5822205>

Boasting:

- Open plan living, kitchen and dining areas including two sitting areas
- Gas cooking, breakfast bar, dishwasher and ample cupboard space
- Recently painted and newly polished timber floorboards
- Great sized rear deck overlooking the spacious backyard
- Dedicated side access large enough for a boat or caravan, plus a separate shed perfect for the tools
- Oversized DLUG, alarm system, split zone ducted air conditioning, ceiling fans and downlights throughout



Hesh Rasitha
02 8883 3592



Donald Thevarajah
0421 889 110

13 Guernsey Way, Stanhope Gardens

Floor Area Sizes

Internal 160m²

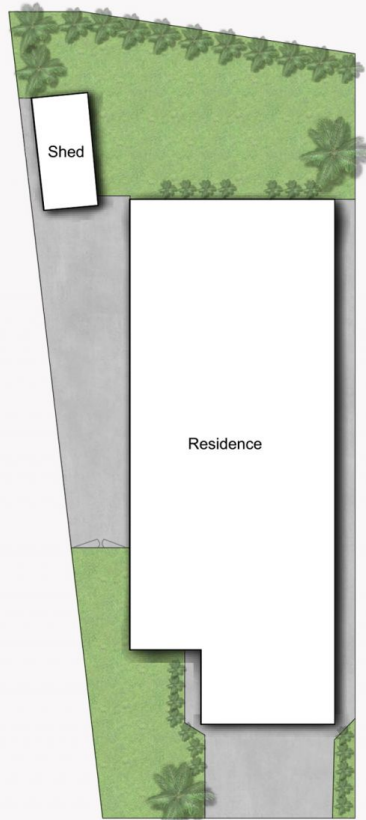
Double Garage 49m²

External 36m²

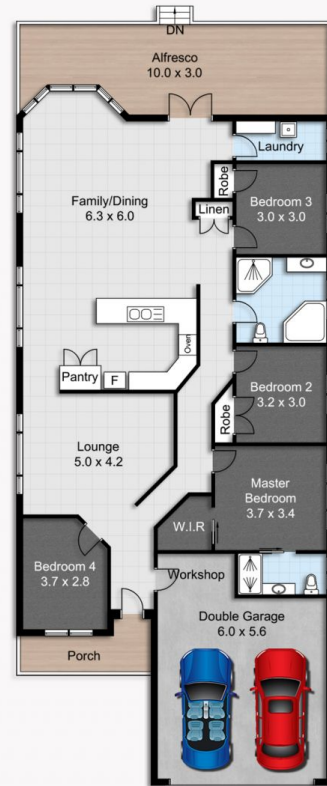
Total 245m²

Block Size 642m²

Mountview_{RE}



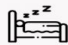
SITE PLAN



GROUND FLOOR

Floor Plans designed for marketing purposes only and are indicative to approximate size and structure.
All dimensions are approximate. Not drawn to exact scale and no liability will be accepted.

Marketing Plan designed by www.shoot2sell.tv **Shoot2Sell**
Photography | Drone | Video

 x 4

 x 2

 x 2

 245 m²

 642 m²