

# Mountview<sub>RE</sub>



**6 Harry Gilbank Way Kellyville NSW**

4 2 2

Mountview RE presents this freshly painted family home positioned in an enviable pocket of Kellyville. Built with the growing family in mind, this double storey home offers multiple living, dining and entertaining areas throughout as well as four bedrooms of accommodation with a separate study/home office downstairs. Conveniently located within walking distance to Kellyville Village, quality local schools and family friendly parks, this immaculately presented family home will tick all the boxes!

Additional features include:

- ~ Open plan formal lounge and dining area
- ~ Study/home office
- ~ Additional sun-filled living area off the kitchen with separate dining area
- ~ Large family area overlooking the outdoor entertaining area
- ~ Modern kitchen equipped with gas cooking, stainless

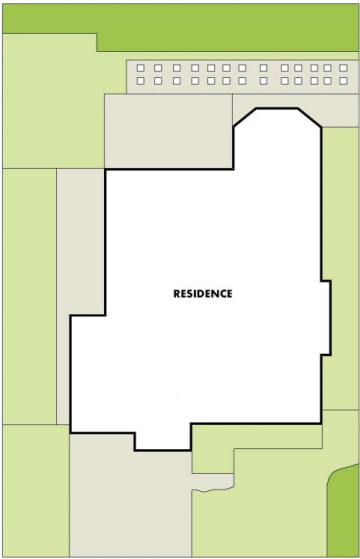
**Price** : \$ 1,216,000  
**Land Size** : 487 sqm  
**View** : <https://www.mountviewre.com.au/sale/nsw/hills/kellyville/residential/house/5811505>



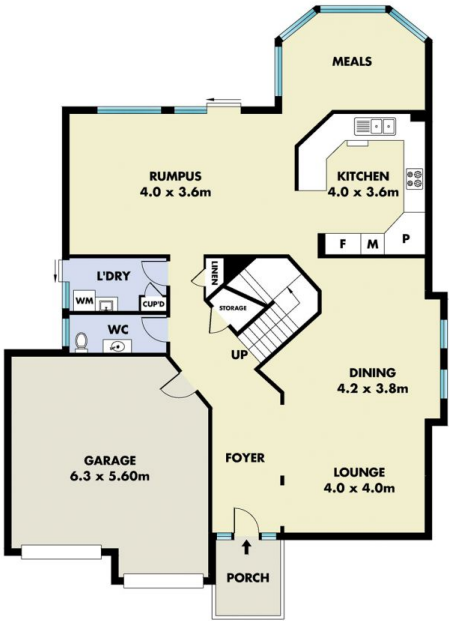
**Malwinder Pandher**  
02 8883 3592



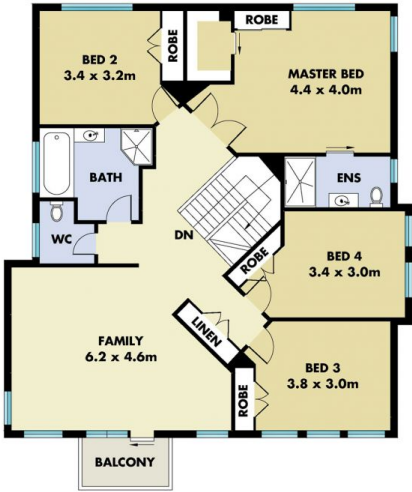
**Inder Nirman**  
02 8883 3592



SITE PLAN



GROUND FLOOR



FIRST FLOOR

This floorplan including furniture, fixture measurements and dimensions are approximate and for illustrative purposes only. All enquiries must be directed to the agent, vendor or party representing this floor plan

6 HARRY GILBANK WAY KELLYVILLE

