



10 Watercress Street The Ponds NSW

4 2 2

Proudly presented by Mountview RE is this immaculate family home positioned in a sought after locale in the heart of The Ponds. Just a short stroll to the The Ponds Shopping centre which boasts popular cafes and restaurants, quality local parks, sporting fields and reserves, walking and bike trails, John Palmer Public School, Jonas Bradley Oval, plus a short drive to Tallawong Station and Rouse Hill Town Centre this home is perfect for anyone looking for a quality lifestyle.

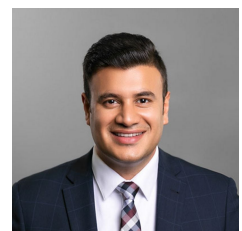
This modern and natural light filled home has an open plan dining and living areas with stacker doors that leads you to a seamless flow to the entertaining area with low maintenance gardens, perfect for entertaining family and friends.

Features;

Price : \$ 1,130,000
Building Size : 204 sqm
Land Size : 450 sqm
View : <https://www.mountviewre.com.au/sale/nsw/hills/the-ponds/residential/house/5785313>



Malwinder Pandher
02 8883 3592



Rahul Sehgal
02 8883 3592

10 Watercress Crescent, The Ponds

Floor Area Sizes

Internal 155m²

Garage 30m²

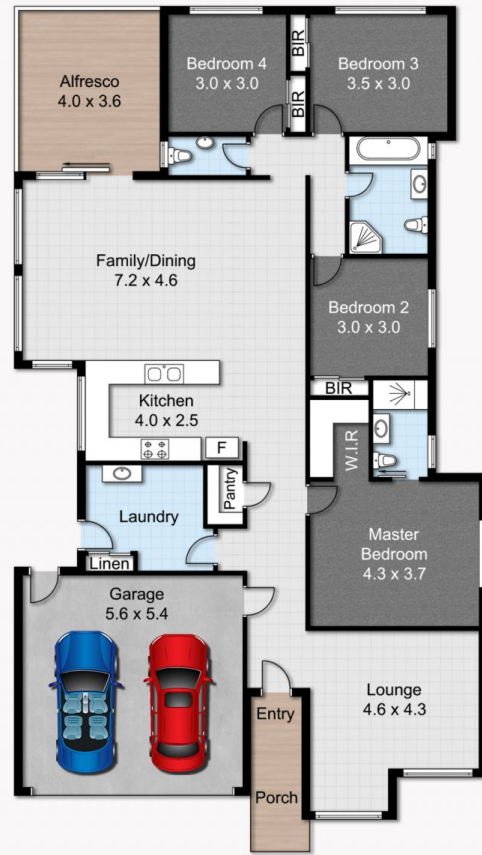
External 19m²

Total 204m²

Block Size 450m²



SITE PLAN



FLOOR PLAN

Floor Plans designed for marketing purposes only and are indicative to approximate size and structure.
All dimensions are approximate. Not drawn to exact scale and no liability will be accepted.

Marketing Plan designed by www.shoot2sell.tv **Shoot2Sell** Photography | Drone | Video



4



2



2



204 m²



450 m²