

# Mountview<sub>RE</sub>



**15 Leilani Street Kellyville Ridge NSW**

4 2 2

Mountview RE is proud to present this absolutely stunning family home in one of the most popular pockets of Kellyville Ridge within walking distance to schools, shops and public transport. Freshly updated with new paint, new carpets, and a gorgeous kitchen - you don't need to spend a cent - just move right in.

**Price** : \$ 950,021  
**Land Size** : 360 sqm  
**View** : <https://www.mountviewre.com.au/sale/nsw/hills/kellyville-ridge/residential/house/5754678>

Boasting:

- Multiple living and dining areas perfect for those who love to entertain
- Recently updated kitchen with 40mm stone benchtops, gas cooking, 900mm stainless steel appliances, dishwasher and ample storage space
- Huge undercover outdoor entertaining area which can be fully enclosed
- Extras include downlights, double roller blinds, recently upgraded split zone ducted air con, split system air con,

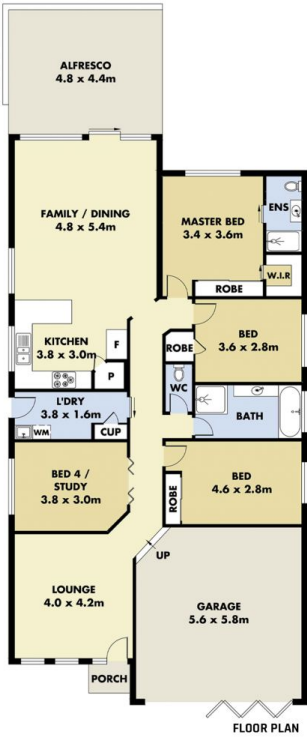
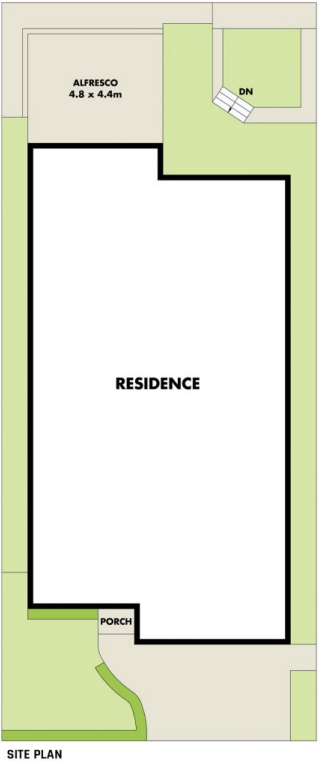


**Hesh Rasitha**  
**02 8883 3592**



**Malwinder Pandher**  
**02 8883 3592**

<https://www.mountviewre.com.au>



This floorplan including furniture, fixture measurements and dimensions are approximate and for illustrative purposes only. All enquiries must be directed to the agent, vendor or party representing this floor plan

15 LEILANI STREET KELLYVILLE RIDGE

