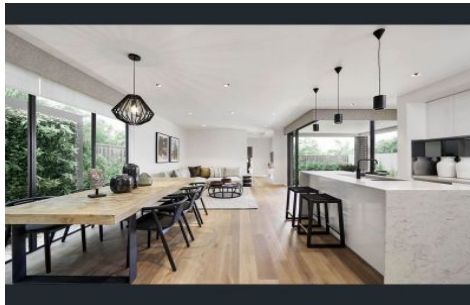
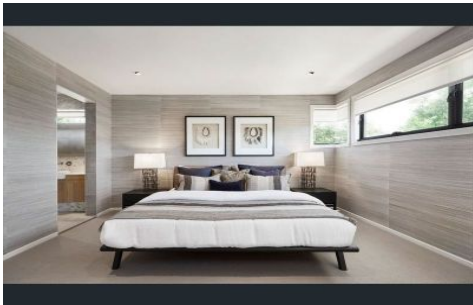


# Mountview<sub>RE</sub>



**33/218 Garfield Road Riverstone NSW**

4 2 1

Mountview RE Proudly presents House & Land packages at exclusive Garfield Grange Estate.

Turn-Key Packages, secure your one before gets sold out.

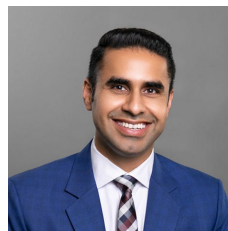
Luxury home with a Modern Facade located in walking distance to Riverstone Station, two local Primary Schools and High School.

- Adjoins 15 acres of land zoned for parks and recreation.
- 200m to upcoming childcare

#### INCLUSIONS:

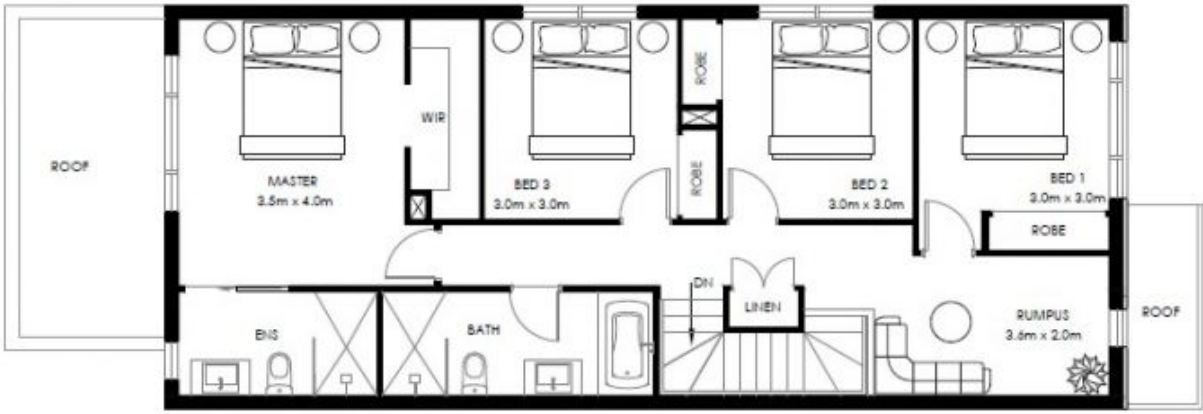
- Architecturally designed Premium facade
- Rendered finish
- 2600mm Ceiling Height
- 40mm kitchen bench top

**Price** : \$ 679,000  
**Building Size** : 200 sqm  
**Land Size** : 201.1 sqm  
**View** : <https://www.mountviewre.com.au/sale/nsw/western-sydney/riverstone/residential/house/5713116>



**Raman Brar**  
**02 8883 3592**

<https://www.mountviewre.com.au>



FIRST FLOOR PLAN



GROUND FLOOR PLAN

TOTAL: 200m<sup>2</sup>

4 2.5 1