

Mountview^{RE}



57/26-30 Hassall Street Parramatta NSW

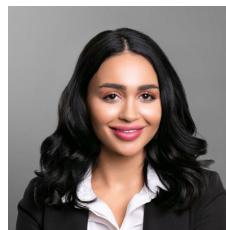
2 2 1

This immaculate modern apartment located in the heart of Parramatta CBD city views from the large entertainer's balcony, both generous sized rooms opens up to their own private balconies. Enjoy the sun-lit rooms and great ventilation. This freshly painted throughout apartment is within easy walking distance to all major amenities including Westfield Parramatta, train station and bus interchange.

Main Features:

- Bright open-plan living/dining room with brand new carpet
- Living/dining opens to large entertainer's balcony with Parramatta city views
- Generous wrap-around modern kitchen with gas cooking, granite benchtop & dishwasher
- Master bedroom features private balcony, built-in robe, carpet & Ensuite

View : <https://www.mountviewre.com.au/lease/nsw/parramatta/parramatta/residential/apartment/5629768>



Affie Asadi
02 8883 3592



Mvre Rentals
02 8883 3592



Mountview_{RE}



Scale in metres, indicative only. Dimensions are approximate. All information contained herein is gathered from sources we believe to be reliable. However, we cannot guarantee its accuracy and interested persons should rely on their own enquiries.



Unit 1057/ 26-30 Hassall Street, Parramatta