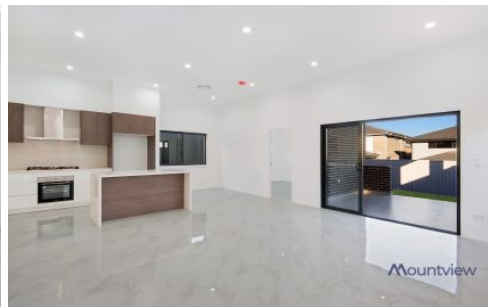


# Mountview<sup>RE</sup>



## 12 Queensbury Street Schofields NSW

4 2 1

Mountview RE please to introduce this brand new home in Sydney's fastest growing regions, the popular North West suburb of Schofields. Situated in prime proximity to Schofields Public School, Schofields Train Station, local schools and various amenities such T-way buses, Tallawong railway station and Rouse Hill Town Centre.

**Price** : \$ 855,000  
**Building Size** : 202 sqm  
**Land Size** : 342.5 sqm  
**View** : <https://www.mountviewre.com.au/sale/nsw/western-sydney/schofields/residential/house/5629202>

### Inclusions:

- ? Build area 22 Square approx with high Ceilings throughout
- ? Open family living and dining area
- ? Separate media/theater room
- ? Ultra-modern generous kitchen with butler's pantry, gas appliances, 40mm ceaser stone bench tops and dishwasher
- ? 4 generous bedrooms, the sumptuous master completes with walk in robes and modern ensuite



**Malwinder Pandher**  
02 8883 3592



**Hesh Rasitha**  
02 8883 3592

<https://www.mountviewre.com.au>

# 12 Queensbury Street, Schofield

Mountview<sup>RE</sup>



SITE PLAN



GROUND FLOOR

Floor Plans designed for marketing purposes only and are indicative to approximate size and structure. All dimensions are approximate. Not drawn to exact scale and no liability will be accepted.

Marketing Plan designed by [www.shoot2sell.tv](http://www.shoot2sell.tv) **Shoot2Sell**  
Photography / Drone / Video

4    
 2    
 1

343m<sup>2</sup>