



## 12 Roxburgh Crescent Stanhope Gardens NSW

4 2 3

Mountview RE is proud to present this stunning family home is set on a generous 601m<sup>2</sup> block of land and offers everything a family could desire for an enviable lifestyle. This home benefits from being only a short stroll to Metro station (150m), T-Way city buses, Stanhope Village Shopping Centre & Leisure Centre. Spectacular clubhouse is at your door step with resort-style facilities such as in ground pool, tennis court and BBQ facilities and alfresco cabanas for year-round, effortless entertaining!

Freshly painted throughout exteriors, interiors and roof tiles, installed brand new kitchen, appliances, blinds and down lights. Move straight in, do nothing and just enjoy.

Features include:

- Flexible floor plan with 3 separate living areas to enjoy
- Spacious formal lounge & dining with polished timber

**Price** : \$ 1,253,000  
**Land Size** : 601 sqm  
**View** : <https://www.mountviewre.com.au/sale/nsw/western-sydney/stanhope-gardens/residential/house/5629180>



**Malwinder Pandher**  
02 8883 3592



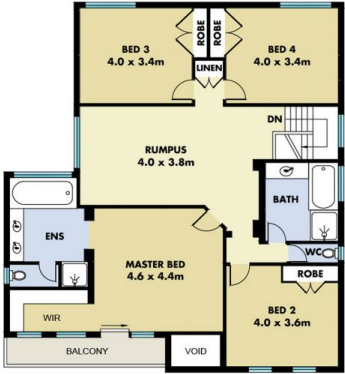
**Hesh Rasitha**  
02 8883 3592



SITE PLAN



GROUND FLOOR



FIRST FLOOR

*This floorplan including furniture, fixture measurements and dimensions are approximate and for illustrative purposes only. All enquiries must be directed to the agent, vendor or party representing this floor plan*

12 ROXBURGH CRESCENT STANHOPE GARDENS

